

AGENDA

A MEETING OF THE MUNICIPAL SERVICES COMMITTEE TO BE HELD ON MONDAY, SEPTEMBER 28, 2020, AT 5:30 P.M. AT THE VILLAGE HALL, 835 MIDWAY DRIVE, IN THE VILLAGE OF WILLOWBROOK, DUPAGE COUNTY, ILLINOIS

DUE TO THE COVID 19 PANDEMIC THE VILLAGE WILL BE UTILIZING A CONFERENCE CALL FOR THIS MEETING.

THE PUBLIC CAN UTILIZE THE FOLLOWING CALL IN NUMBER:

Dial in Phone Number: 630-920-2488
Code: 012153#

Written Public Comments Can Be Submitted By 5:15 pm on September 28, 2020 to mmertens@willowbrook.il.us

1. CALL TO ORDER
2. ROLL CALL
3. APPROVAL OF MINUTES:
 - a. August 24, 2020 Meeting of the Municipal Services Committee
4. Discuss Proposals for the Potable Water Circulation System for the Three-Million Gallon Standpipe
5. Discuss the Surplus of One (1) 2005 Ford F-550 Dump Truck
6. Discuss the Surplus of One (1) 2006 Ford F-350 Service Body Truck
7. SUPERINTENDENT OF PUBLIC WORKS UPDATE
 - a. MFT Program and Village Hall Parking Lot
 - b. Refuse Reports
 - c. August 2020 Monthly Permit Activity Report
 - d. 2020 Amnesty Day September 28, 29 and 30th and Fall Brush Program October 12-16th
 - e. Valve Exercising Program / Leak Survey Pro-Maps Atlas Update Program
8. VISITOR'S BUSINESS

(Public comment is limited to three minutes per person)
9. ADJOURNMENT

Mayor

Frank A. Trilla

Village Clerk

Leroy R. Hansen

Village Trustees

Sue Berglund

Umberto Davi

Michael Mistele

Gayle Neal

Paul Oggerino

Gregory Ruffolo

Village Administrator

Brian Pabst

Chief of Police

Robert Schaller

Director of Finance

Carrie Dittman



MINUTES OF THE REGULAR MEETING OF THE MUNICIPAL SERVICES COMMITTEE OF THE VILLAGE OF WILLOWBROOK HELD ON MONDAY, AUGUST 24, 2020 AT 5:30 P.M. AT THE VILLAGE HALL, 835 MIDWAY DRIVE, IN THE VILLAGE OF WILLOWBROOK, DUPAGE COUNTY, ILLINOIS

1. CALL TO ORDER

The meeting was called to order at 5:35 PM. It was noted that this meeting was held via conference call due to the Covid-19 pandemic.

2. ROLL CALL

Those physically present at roll call were Trustee Terrence Kelly, and Assistant Village Administrator Michael Mertens.

Those present via Zoom Conference call were Trustees Sue Berglund, Paul Oggerino and Superintendent of Public Works Joe Coons.

3. APPROVAL OF MINUTES

After review of the draft minutes from the July 27, 2020 meeting of the Municipal Services Committee, Trustee Terrence Kelly made a motion to approve the minutes as presented. Trustee Sue Berglund seconded the Motion. After a roll call, Motion Carried.

4. DISCUSSION – A RESOLUTION AUTHORIZING THE PURCHASE OF BULK TREATED ROCK SALT FOR USE WITHIN THE VILLAGE OF WILLOWBROOK

Superintendent Coons explained that the County of DuPage went out for bid for the untreated rock salt. Compass Minerals was the low bid and was awarded the contract. The Village of Willowbrook currently has approximately 500 tons of untreated rock salt in the salt bin at the Public Works facility. 800 ton of the untreated salt was ordered for the upcoming winter season at a cost of \$81.13 per ton delivered. The Village is required to take 80% of the order with an option to take 130% if it is a bad winter season. The cost of the 80% would be \$51,923.20.

As in years past, the Village of Willowbrook has purchased treated salt that is utilized when temperatures fall below 15 degrees Fahrenheit. Compass Minerals reached out to local municipalities this year to inform us that they would have treated salt available this year. Usually Compass reserves the treated salt for State and County agencies. Because last winter was not as severe, a limited quantity is available this year for local municipalities.

The Village of Willowbrook solicited for prices on the treated salt from multiple vendors for cost comparisons. Compass Minerals, which utilized the State bid pricing and came in with the lowest price at \$86.75 per ton delivered. Staff recommends an order size of 200 tons of treated salt for the 2020/21 winter season. As with the untreated rock salt, the Village would be required to take 80% or 160 tons of the treated rock salt. The cost to take the 80% of treated salt would be \$13,880 with the option to take the other 20% or 40 tons at the same price of \$86.75 per ton. An amount of \$80,000 was budgeted for rock salt for FY 2020/21. If the Village takes the minimum 80% of both treated and untreated rock salt, the total would

be \$65,803.20. This will give the Village budget flexibility should the Village need to purchase additional salt due to a harsh winter season. Trustee Kelly made a motion to recommend approval of 160 tons of treated rock salt purchase at \$86.75 per ton, Trustee Berglund seconded the motion. Roll Call. Motion Carried.

5. SUPERINTENDENT OF PUBLIC WORKS UPDATE.

a) MFT Program – Dan Lynch from Burke Engineering dropped off copies of the signed contract from Brothers Asphalt who was the low bid. The contract needs to be signed by the Mayor and Village Clerk. The papers will then be sent to IDOT for a final submittal. A pre-construction meeting is scheduled for Thursday, August 27, 2020. A projected project start date is projected for the 1st week of September.

b) Village Hall Parking Lot – This is not part of the MFT funding, but the project will be done in conjunction with the road program. A project start date is projected for the 1st week of September. The parking lot will be closed during construction and staff vehicles will be relocated to the east side of the building. Some sidewalk work will also be included in the project.

c) Potable Water Circulation Equipment for the Three-Million Gallon Standpipe – Currently waiting on pricing for the installation. Due to the unique nature of this type of work, it is difficult to get pricing.

d) Valve Exercising Program / Leak Survey Pro-Maps Atlas Update Program – Currently seeking other quotes to complete these tasks. A.T.S is currently putting together a quote to do the full scope of the work.

e) Water and Refuse Reports – Water usage was a little high due to summer usage and the finishing of the fire hydrant flushing program. Republic Services submitted their final report, as Groot has now become the Village's refuse contractor.

f) July 2020 Monthly Permit Activity Report – A little higher than June's numbers. A few higher plan reviews and American Family Care had a permit for \$5,473.01.

Other Project Updates: Sheridan Plumbing has jetted and televised the storm sewer line in the Nantucket Subdivision. This was done in conjunction with the HOA of Nantucket. The storm sewer is technically a privately owned line, but it does affect up and down stream storm sewers owned by the Village. Therefore, the cost of this job was split between the Village and the HOA of Nantucket. Any needed repairs on the storm sewer will be at the cost of the Nantucket HOA.

The Village did an emergency brush collection due the recent storms. D-Ryan was contracted to collect, and chip fallen debris.

Some sidewalk squares were replaced throughout town. Public Works had a list going of various complaints and trip hazards.

The seasonal staff will be working their last week due to the start of school. One seasonal employee will still be available to put some hours in during the week between classes.

S.W.A.P. was in town for the week to do a thorough cleanup of the Village parks. This was the first time we had them this year due to the Covid-19 outbreak.

Two small service leaks were found on the water system and they are scheduled for

repair the first week of September.

The fall brush collection has been scheduled for the week of October 12th – 16th. The Village will be sending out the postcard reminder in early October. The fall tree planting program will follow the brush collection.

6. VISITORS BUSINESS

None

7. ADJOURNMENT

Motion to adjourn was made by Chairman Oggerino, seconded by Trustee Berglund. Roll call. Trustees Oggerino and Berglund were Yes, and Trustee Kelly was no. Motion Carried.

This was Trustee Terrence Kelly's final Municipal Service Committee Meeting. We all wish him the best in his next endeavors.

The meeting was adjourned at 5:52 PM.

**MUNICIPAL SERVICES COMMITTEE MEETING
AGENDA ITEM SUMMARY SHEET**

| AGENDA ITEM DESCRIPTION | COMMITTEE REVIEW |
|--|---|
| Discuss Proposals for the Potable Water Circulation System for the Three Million Gallon Standpipe | <input type="checkbox"/> Finance/Administration <input checked="" type="checkbox"/> Municipal Services <input type="checkbox"/> Public Safety <u>Meeting Date:</u> September 28, 2020 |

- | | |
|--|---|
| <input type="checkbox"/> Discussion Only | <input type="checkbox"/> Approval of Staff Recommendation (for consideration by Village Board at a later date) |
| <input checked="" type="checkbox"/> Seeking Feedback | <input type="checkbox"/> Approval of Staff Recommendation (for <u>immediate</u> consideration by Village Board) |
| <input type="checkbox"/> Regular Report | <input type="checkbox"/> Report/documents requested by Committee |

BACKGROUND

Staff is recommending that the Village consider a potable water circulation system (mixer) for the three-million-gallon standpipe at the Public Works facility located on Willowbrook Centre Parkway. A standpipe water circulation system was included as part of the Village of Willowbrook FY 2020/2021 water improvement program. The budgeted amount for the capital improvement program was in an amount of \$25,000.

In the winter of 2018/19 a polar vortex hit the Midwest region. This deep freeze triggered ice to form in the standpipe that caused significant damage to the cathodic protection equipment inside the tank. The standpipe needed to be completely drained to make the necessary repairs.

Public works staff recommend the installation of the water circulation system as the mixer system helps circulate the water in the tank to keep it from becoming stagnant at the bottom of the tank, and to keep chlorine levels consistent in the standpipe. Another benefit of the circulation system would be to keep water moving in the tank during the cold winter months to prevent ice buildup.

This potable water circulation system was discussed at the July 27, 2020 Municipal Services Committee meeting. The Committee recommended that staff seek multiple proposals for the system and bring the subject back to the Committee for further consideration.

The Village engineer, Christopher B. Burke Engineering, Ltd., specified a circulation system as manufactured by Gridbee, model number GS-A-15-potable tank mixer. An Alternate system manufactured by Kasco is available. Our Village Engineer advised that the alternate system has a trapeze style support, with welded chains at two points inside of the interior wet system. The exposed impeller and the submersible plug in cord set that the electrical connection is free floating with the water storage area.

The potable water circulation system options are summarized as follows:

| | |
|--|-------------|
| Mixer System as Specified by CBBE: | |
| GridBee GS-A15 Submersible Air Mixer System – 5 Year Warranty | \$19,380.00 |
| Installation of the Gridbee GS-A15 Air Mixer System by Jude Vickery | \$5,000.00 |
| Installation of the Gridbee GS-A15 Air Mixer System by Medora | \$12,635.00 |
| | |
| Optional Mixer System: | |
| Kasco Tank Mixer Series 4400C61 CertiSafe NSF 61/372 – 3 Year Warranty | \$10,995.00 |
| Installation of Kasco Tank Mixer Series 4400C61 CertiSafe NSF 61/372 | TBD |

Currently, the Village has only been able to solicit two quotes for the installation of the specified Gridbee GS-A15 submersible air mixer system. This is a specific type of installation, so it has been difficult to find a contractor that does this type of work. Jude Vickery works for Corpro/Aegion and has done the maintenance on our cathodic protection for our water tanks for many years and is familiar with our system. SCADA connection provided by others.

The Kasco tank mixer system installation proposal is currently under review and a general price quote is to be determined by the manufacturer.

STAFF RECOMMENDATION

Review the mixer system options and seek further direction from the Committee.

Three Million Gallon Standpipe – Willowbrook Centre Parkway



Gridbee GS-A15 Submersible Air Mixer and Installation Options



Main Office & Service Center
1-866-437-8076 | medoraco.com
3225 Highway 22, Dickinson, ND 58601

Purchase Quotation: Potable Water Circulation Equipment for the 3MMG Standpipe

Date: April 3, 2019

Project #: 11408

To: Gerald Hennelly
Christopher B. Burke Engineering, Ltd.
9575 W. Higgins Rd.
Rosemont, IL 60018
ghennelly@cbbel.com • 847-823-0500

From: Robert Curie, Drydon Equipment, Inc., Medora Corporation Local Representative, Bourbonnais, IL
bcurie@drydon.com • 815-936-1810

Mike Christensen, Medora Corporation East U.S. Manager, Wells, MN
mike.c@medoraco.com • 866-553-5590

Amy Dinius, Medora Corporation Engineered Sales Dept., Denver, CO
amy.d@medoraco.com • 866-437-8076

1. Location Information

Tank Name: 3MMG Standpipe

Address: 802 75th Street

GPS: 41.754959, -87.939339

Tank Style: Steel, Standpipe

Tank Volume: 3,000,000 Gallons

Max Flow Rate (gpd): 900,000

Max Fill Rate (gpm): 625

Height (ft): 150

Diameter (ft): 58

2. Customer Objectives

The objective is to provide thorough mixing of the tank to reduce water age and cold-climate ice buildup. Thorough mixing not only improves water quality, it also allows for representative sampling of the tank water, and disinfectant boosting if ever needed.

NOTE: If this tank has very low flows through it during winter months, an additional heat source may be required for optimal ice prevention. We recommend a daily turnover of at least 20% of the tank's volume. A Submersible Electric Potable Water Tank Heater is included in the options table below.

3. Medora Co. Recommendation/System Design for this Project

To meet the above objectives for the 3MMG Standpipe, we recommend the placement of one (1) GridBee GS-A15 air-powered mixer. The minimum hatch size for this placement is 12" diameter. This unit requires 120 vAC power; which is to be provided by the customer/contractor.

Equipment Notes: This mixer requires exterior airline running up the side of the tank and interior airline running inside the tank to the mixer located at the bottom of the tank. Both exterior and interior airline is included in this proposal. A weatherproof enclosure is recommended for the air compressor, an option is offered below in the Options Table.

Performance Guarantee: These mixers will completely mix the subject tank. In continuous operation, (1) at least once per 24 hours all water temperatures within the tank shall converge to within 0.8 degrees C, and (2) at least once per 72 hours all chlorine concentrations within the tank shall converge to within 0.18 mg/l.

4. Equipment Cost

GS Series Air Mixers

| Quantity | Equipment Description | Cost Each | Equipment Total |
|---------------------|--|-----------|---------------------|
| 1 | GS-A15 Submersible Air Mixer with 0.5hp compressor: | \$11,400 | \$11,400 |
| 1 | GS-A Air Hose Cold Weather Kit: w/ air hose heating element, 150' interior and 200' exterior air hose: | \$6,580 | \$6,580 |
| 1 | GS Series Control Box with SCADA Monitoring: | \$1,200 | \$1,200 |
| Equipment Subtotal: | | | \$19,180 |
| Applicable Taxes: | | | -to be determined - |

Choose Only One (1) of the Following:

Project Total

| | | |
|--|----------|----------|
| Option #1: FOB Destination, cost for Freight Prepay & Add: | \$200 | \$19,380 |
| Option #2: Factory Delivery and Placement with On-Site Training (Startup if customer supplied power is available): | \$12,635 | \$31,815 |

Note: Installation of the GS Series Air mixers are well within the scope of work most cities or contractors can perform. An installation manual is provided with all machines. Power source for the mixer, control box, and compressor to be supplied by the customer/contractor.

| Options for GS Series Air Mixers | | |
|----------------------------------|--|-----------------------|
| WPE1 Weatherproof Enclosure | Weatherproof fiberglass enclosure for Air Compressor Units. (Dimensions: 28-1/4"W x 18-3/4"D x 19-1/2"H) Shipping Weight approximately 25lbs. | \$800 + \$150 Freight |
| Interior Chemical Injection Line | 100 ft. long x 1/2" ID injection hose setup to connect to the mixer and hang loose below the hatch, does not include the tank penetration thru fitting for metals tanks. | \$250 per 100' |
| Chemical Injection Thru Fitting | Tank penetration thru fitting for metal tanks to seal around the chemical injection hose when hose is run to the outside of the tank. | \$460 per fitting |

| | | |
|--|---|----------------------------|
| Exterior Chemical Injection Hose Kit | Includes: 50 feet of 3/8" Stainless Steel braided exterior chemical injection hose with quick connect valve box. | \$725 |
| Additional - Exterior Chemical Injection Hose | Additional lengths of 3/8" Stainless Steel braided exterior chemical injection hose: priced per ft. | \$7.20 per ft |
| Motor Control Panel SCADA not included | <u>Control Panel:</u> 8" X 6" X 4" Carlon NEMA 4X enclosure, UL listed, 2-position On/Off switch, contactor for mixer control, run indicator light, timer, grounding lug, 120v/1ph male molded plug, and locking latch for security. SCADA not included. <u>Timer:</u> Programmable timer for scheduling run times and duty cycles to prolong motor life. The GS-9/GS-12 mixer is rated for continuous duty, using the timer is not typically recommended. | \$800 per mixer |
| Control Box with SCADA Monitoring | <u>Control Box:</u> 10" X 8" X 4" Carlon NEMA 4X enclosure, UL listed, HOA switch, contactor for mixer control, run indicator light, SCADA monitoring, grounding lug, 120v/1ph male molded plug, and locking latch for security. <u>SCADA:</u> 4-20 mAmp current transducer provides analog output for motor current which allows for monitoring proper operation, and a 24 VDC relay for remote on / off control of the mixer. | \$1,200 per mixer |
| STH-8400 Submersible Electric Potable Water Tank Heater: | <i>Typically used in cold climates when the tank has less than 10% turnover.</i> 316 SS, includes a control panel, float switch, 50' of electrical cable and chain. Fits through 12" or larger roof opening. Nominal 240VAC/1PH. | \$7,300 + \$450 Freight |
| Portable Disinfectant Boost System | <i>Consider when occasional on-site boosting is desired.</i> Portable Disinfectant Boost System (designed to be installed in the back of a pickup), safe, durable chemical transfer system to boost disinfectant in potable water reservoirs. Boosting rate up to 4 gpm, one system can treat multiple tanks, approximate dimensions: 20" W x 52" L x 20" H. Air compressor (4 cfm @ 60 psi) is required to operate the air-powered diaphragm pump; air compressor not included. Brochure available upon request. | \$9,070 + \$450 Freight |
| ResidualHQ Disinfectant Control System | Designed for continuous monitoring and management of disinfectant residual levels. Limited maintenance, simple single-point calibration. <u>Water Quality Monitoring</u> includes continuous monitoring and logging of Total and Free Chlorine residual concentrations utilizing two reagent-free, low- maintenance, amperometric membrane sensors. <u>Feed Capabilities</u> include feed rates for bulk disinfectant chemicals. Unit produces and delivers chlorine, ammonia, and chloramine containing solutions. Adjustable concentrations and ratios. Automated and manual feed operations. Redundant flow verification. Configurable volume and frequency limits. <u>SCADA includes</u> control system accessed via 7" color touch- screen and tactile buttons, or remotely through Modbus protocols (RTU or TCP/IP). Digital outputs available for additional status monitoring. Data logs for various historical actions and parameters. Details available at: https://www.medoraco.com/residualHQ | |
| THM Removal System | Effective and economical spray nozzle system that works in conjunction with a GridBee / SolarBee mixer to strip TTHM from potable water storage tanks and clearwells. Detail available at: https://www.medoraco.com/THM-VOC-reduction | |
| Beekeeper Service Program | The Beekeeper is a program that utilizes Factory Crews to service and maintain proprietary designed equipment. Details available at: https://www.medoraco.com/beekeeper | |

5. General Provisions

A. Material Supplier only. This quotation is to supply materials only. No contracting or construction work of any type is being offered or will be performed by Medora Corporation (Medora) at the jobsite or at any Medora location or factory.

1) To order the materials in this quotation, the purchaser should use the same type of purchase order as would be used to order other materials; for example, a desk or a forklift. Please do not attempt to order the equipment quoted here with a "contractor" or "subcontractor" agreement of any sort, because Medora is strictly a material supplier, not a contractor, and would have to reject that type of agreement.

2) The US Department of Labor clearly defines a Material Supplier, such as Medora, and its allowable activities. All activities by Medora factory personnel to transport, place and start up the Medora equipment are incidental to Medora being a Material Supplier, and Medora will not perform contracting or construction work of any type for any project. Also, no local, state, or federal laws regarding contractors or construction projects, or Davis Bacon or similar reporting requirements, are applicable to this quotation because Medora is not a contractor and does not perform any construction activities.

3) It is the responsibility of the purchaser of Medora's equipment to determine in advance whether there are any contracting or construction activities required in order for Medora's equipment to be made operational. Usually there aren't any such activities; but if there are, it is the purchaser's sole responsibility, at its sole cost, to perform all of those activities in advance of Medora's equipment

B. Assumptions: This quotation may be based on worksheets, calculations or other information that has been provided by the City. The City should bring to Medora's attention any discrepancies, errors in data, or false assumption that Medora may have made while preparing this quotation.

C. Expiration: This quotation expires in 90 days, or on the date of any new quotation for this project, whichever is sooner.

D. Delivery Time: Delivery time varies, for Equipment Only it is usually within 2-3 weeks from order date and for Factory Placement it is usually within 6-8 weeks from order date.

E. Payment Terms: For a federal, state, or local government purchaser with a good credit rating, full payment is due in US dollars 30 days after invoice date, which is generally the date when the goods leave the Medora factory. For a non-government purchaser, full payment must be made by credit card or cashier's check before the goods leave the Medora factory though, in some cases, based on availability of a payment bonding or a bank Letter of Credit, 30 day credit terms may be extended upon special request by the purchaser. If there are any issues with these payment terms, please do not rely on this quotation until the issues have been resolved with Medora.

F. Add for Taxes and Any Governmental Fees: Except as indicated above, no taxes, tariffs or other governmental fees are included in the quote shown above, nor are there any costs added for special insurance coverage the customer may require. It is the customer's responsibility to pay all local, state, and federal taxes, including, sales and use taxes, business privilege taxes, and fees of all types relating to this sale, whether they are imposed on either Medora or the customer, or whether these taxes and fees are learned about after the customer orders the equipment. The customer's purchase order should indicate any taxes or fees due on equipment and/or services, and whether the customer will pay them directly to the governing body or include the tax payment with the purchase for Medora to submit them to the governing body.

G. Add for Special Insurance Requirements: Medora Corporation maintains adequate liability and workman's compensation insurance to generally comply with its requirements for doing business in all fifty U.S. states, and will provide at no charge certificates of insurance when requested. However, if additional insurance or endorsements beyond the company's standard policy are required by the customer, then the costs of those additional provisions and/or endorsements will be invoiced to the customer after the costs become known.

H. Add for Special Training, Safety, Signage, or Other Requirements: Medora has a very strong safety training program for its employees. If any special training classes for Medora personnel are required by the customer, please notify Medora well in advance. The cost of this training will be added to this quotation or invoiced to the customer separately. The same applies to any other special requirements the customer may have, including providing of project signage or any other requirement.

I. Safe and Accessible Tank Condition Required. This quotation is based on the best information made available to us by the above date. If this equipment is ordered, Medora's engineering team will need detail information and photographs to plan the equipment placement. If the detail information changes the scope significantly, Medora reserves the right to withdraw or alter this quotation, even if the equipment has already been ordered. To avoid surprises, the City should supply detailed tank information and photos as soon as possible. To ensure the safety of Medora's crews, it is the City's responsibility to make sure that all antennas (radio, cell phone, other) located at or near the tank site are inactivated during the placement of this equipment.

J. Customer to Follow Medora's Maintenance and Safety Guidelines: The customer agrees to follow proper maintenance, operating, and safety instructions regarding the equipment as contained in the safety manual that accompanies the equipment or is sent to the customer's address.

K. Regulatory Compliance. The customer must comply with all applicable Federal and State governmental regulations. It is the customer's sole responsibility to inquire about governmental regulations and ensure that GridBee and SolarBee equipment is deployed and maintained so as to remain in compliance with these regulations and guidelines, and to hold Medora harmless from any liability caused by non-compliance with these regulations and guidelines.

L. Warranty. Medora Corporation has the best parts and labor warranties that we are aware of in the industry. The details of the Warranty which applies to this project are either attached to this document or are available at:

<https://www.medoraco.com/resources/warranty-information>.

6. To Accept This Quotation

To order the equipment, please issue a purchase order to Medora Corporation, 3225 Hwy. 22, Dickinson, ND 58601. The purchase order can be mailed to the address above, faxed to 866-662-5052, or emailed to the home office at orderprocessing@medoraco.com.

This Medora Corp. quotation should be attached to the purchase order, and the purchase order should refer to the Medora Corp. quotation by date, and should accept the quotation in its entirety. Acceptable language on the purchase order would be "Quantity: 1. Description: "Equipment per the attached quotation from Medora Corp dated _____, including all terms shown on that quotation. " If there is any language missing, or extra language in the purchase order such as a referral to specifications, then Medora Corp. will not be able to accept the purchase order.

If a purchase order is not utilized, please sign and date below, provide billing information, and fax to 866-662-5052 or email to orderprocessing@medoraco.com.

Signing below acknowledges acceptance of this quotation.

Proposal Date: April 3, 2019

Project #: 11408

Signature

Date

Printed Name

Title

GridBee GS Submersible Mixer Limited Replacement Warranty

GridBee GS Mixers. The GridBee Series GS mixers are warranted to be free of defective parts, materials, and workmanship for a period of five years from the date of purchase. This warranty is valid only for use of the equipment in accordance with the owner's manual and any initial and ongoing factory recommendations. This warranty is limited to the repair or replacement of defective components only and does not apply to normal wear and tear. If the factory's service crews performed the original on-site placement and startup, then this warranty also includes labor. Where labor is included, in lieu of sending a factory service crew to the site for minor repairs, Ixom may choose to send the replacement parts to the owner postage-paid and may pay the owner a reasonable labor allowance, as determined solely by Ixom, to install the parts. There is no liability for consequential damages of any type. The warranty that is submitted and provided with the purchased equipment is the valid warranty.

GridBee control panels, cold weather hose kits, air compressors and any optional accessories. These items are considered "buyout" items for Ixom, and as such include a warranty against defects in material and workmanship for one year from the date of purchase. This warranty covers parts only, not labor. Parts that are determined by Ixom to be defective in material or workmanship under normal use during the one year warranty period will be repaired or replaced. Shipping charges are the responsibility of the customer.

Terms applicable to all equipment. This Limited Replacement Warranty is subject to the terms of Ixom's General Terms and Conditions of Sale. In the event of any inconsistency between the terms of this Limited Replacement Warranty and Ixom's General Terms and Conditions of Sale, the terms of this Limited Replacement Warranty shall prevail to the extent of that inconsistency.

Quote

Jude Vickery
43 West St.
Bristol, IL 60512-9764
630-777-2350
judevickery@live.com

| DATE | Quote # |
|-----------|---------|
| 6/17/2020 | 289 |

BILL TO

Willowbrook, Village Of
835 Midway Drive
Willowbrook, IL 60527-5549

| ITEM | DESCRIPTION | QTY | RATE | AMOUNT |
|-----------------------|--|-----|------|----------|
| Mixer Installation | Installation of GS-A15 Submersible Air Mixer with 0.5hp compressor, GS-A Air Hose Cold Weather Kit: w/ air hose heating element, 150' interior and 200' exterior air hose, GS Series Control Box with SCADA Monitoring, including labor, testing, and energizing system. (SCADA connection provided by others.) GS-A15 Mixer and installation kit to be purchased by the village. | 1 | | 5,000.00 |
| Subtotal | | | | 5,000.00 |
| 0% Tax | | | | |
| Total | | | | 5,000.00 |
| Balance Due | | | | 5,000.00 |

Kasco 4400C61 CertiSafe NSF 61/372

Mixer System



GASVODA & ASSOCIATES, INC.
 An Employee Owned Company
 "Helping people use water efficiently"

PROPOSAL

TO: Village of Willowbrook
 835 Midway Dr.
 Willowbrook, IL 60527

DATE: September 24, 2020

PROJECT: 3,000,000 Gallon Mixing System

ATTN: Joe Coons

Phone # :

Email: jcoons@willowbrook.il.us

Fax # :

The seller hereby offers the following equipment subject to all terms & conditions noted on this contract:

We are pleased to offer the following equipment for your consideration on the above named project.

Qty

Description

- | | |
|---|---|
| 1 | Kasco recommends one (1) 4400C61 CertiSafe NSF 61/372 mixers for this application to include: <ul style="list-style-type: none"> • Kasco 4400C61 CertiSafe Potable Tank Mixer (120V) with 100ft UL power cord. • Kasco Suspended Mount kit includes 2-50ft 316 stainless retrieval chain, Stainless hardware to install • Kasco SCADA CS150 (120V) control panel is UL listed, NEMA 4X, 120v 1phase, with Scada monitoring and control, HOA switch, Run and Fault Lights, GFCI, 3 additional dry contacts and Automatic Low water level inhibitor feature |
|---|---|

Total Budgetary Price including freight will be: \$ 10,995.00

Clarifications and Exceptions:

- GFCI and electrical disconnect box provided by others
- Installation provided by others

This proposal and the attached terms and conditions cannot be modified in any way except by expressed written approval of Gasvoda & Associates, Inc.

| | |
|------------------------|--|
| TERMS: | 100% 30 days NET. |
| FREIGHT: | <u> X </u> F.O.B. factory, allowed to jobsite. <u> </u> Prepay and add to invoice |
| START-UP: | <u> 0 </u> day(s) start up is included. Additional start up, if required, will be billed at our standard rate. |
| TAXES: | ALL applicable taxes must be added. |
| SUBMITTAL DATA: | <u> - </u> to <u> - </u> weeks after receipt of order |
| DELIVERY: | <u> 1 </u> to <u> 2 </u> weeks after release date of September 30 th |
| DURATION: | This proposal is valid for 30 days after which we reserve the right to review or withdraw. |

Project:
GASVODA & ASSOCIATES, INC.

Page 2 of 3

ACCEPTED: _____

(Authorized signature)

BY: _____

E.J. Bukowski

Title: _____

E.J. Bukowski – Sales Engineer
ejbukowski@gasvoda.com

Date: _____

1530 Huntington Drive / Calumet City, Illinois 60409 / Tel. 708-891-4400 / Fax: 708-891-5786

AUTHORIZATION TO PROCEED:

Authorization to proceed with placing the proposed equipment on order must be acknowledged by the return of this document properly executed where required. Such acknowledgment will be considered as your acceptance of this proposal understanding the terms stated above and on the reverse side of this proposal. No submittals will be started and no equipment will be released to manufacturing prior to our receiving your formal authorized return of this document.

Thank you for the opportunity to provide our proposal. Please do not hesitate to call with any further questions or requirements.

Please be sure to fill in the required "Ship To" information below and return it at the time of placing your order. Failure to do so will result in shipment of the equipment to the Buyers address.

BILL TO: _____

SHIP TO: _____

PURCHASE ORDER NUMBER: _____

SPECIAL MARKINGS: _____

TAXABLE: _____

TAX ID#: _____

GASVODA & ASSOCIATES INC. TERMS AND CONDITIONS OF SALETERMS

1. Terms of payment are 100% net 30 days from "date of invoice", unless otherwise stated for all orders less than \$100,000.
2. Orders greater than or equal to \$100,000 are subject to progress payments noted below. Terms remain net 30 days from "date of invoice."
 - a. 25% due upon release to construction or approved shop drawings
 - b. 75% due upon shipment or notice of readiness to ship

CONDITIONS

1. General

Subject only to any credit terms which Seller may extend, the total purchase price hereunder is due at such time, within or after the estimated shipment period specified on the face hereof, as said equipment is ready to be shipped. Buyer shall pay in full all invoices within the time for payment specified therein and BUYER'S PAYMENT OBLIGATION IS NO WAY DEPENDENT OR CONTINGENT UPON BUYER'S RECEIPT OF PAYMENT FROM ANY OTHER PARTY. Any balance owed by Buyer for 30 days or more after the same becomes due is subject to a 1-1/2% per month delinquency charge until paid. In addition to all other amounts due hereunder, Buyer shall reimburse Seller in full for all collection costs or charges, including reasonable attorney's fees, which Seller may incur with respect to the collection of past due amounts from Buyer.
2. Warranty

Seller warrants only that said equipment is free from defects in materials and workmanship as set forth in Seller's standard Certificate of Warranty furnished to Buyer at the time of final shipment. Seller makes no other warranty concerning said equipment beyond that set forth in said Certificate and expressly disclaims any warranty of merchantability or fitness for any particular process not described in the applicable drawings and specifications.

Seller's sole responsibility with respect to any equipment which proves to be defective as to materials or workmanship is either to replace or to repair the same as is set forth in said Certificate of Warranty. Unless authorized in writing by Seller, Seller is not responsible for any charge or expense incurred for the modification, servicing or adjusting of said equipment after the same has been delivered to Buyer.
3. Liability of Seller

Seller is not liable in any event hereunder for any consequential, incidental, or liquidated damages or penalties.
4. Claim Period

Buyer shall immediately inspect said equipment upon receipt thereof. Seller is not obligated to consider any claim for shortages or non-conformance unless notified thereof by Buyer within 10 days after Buyer's receipt of said equipment.
5. Cancellation

Should Buyer cancel this agreement without Seller's prior written consent, Seller may, at its option, recover from Buyer a cancellation charge of not less than 20% of the purchase price hereunder.
6. Taxes

Sale may be subject to state sales tax depending on the state. Gasvoda & Associates requires proof of exemption for all nontaxable sales. Regardless of exemption status, Gasvoda & Associates proposal does not include any sales tax. Payment of any sales tax remains the responsibility of the purchaser.
7. Storage

If at such time, within or after the estimated shipment period specified on the face hereof, as Seller notifies Buyer that said equipment is ready to be shipped Buyer requests a delay in shipment, Seller may, at its option, agree to store said equipment for a period of time determined by Seller, provided that such agreement will not affect Buyer's obligation to pay in full all invoices as they become due, and provided further that for each month, or portion thereof, said equipment is stored by Seller, Buyer shall pay to Seller as a storage fee an amount equal to 1% of the balance due hereunder.
8. Drawings, Illustrations and Manuals

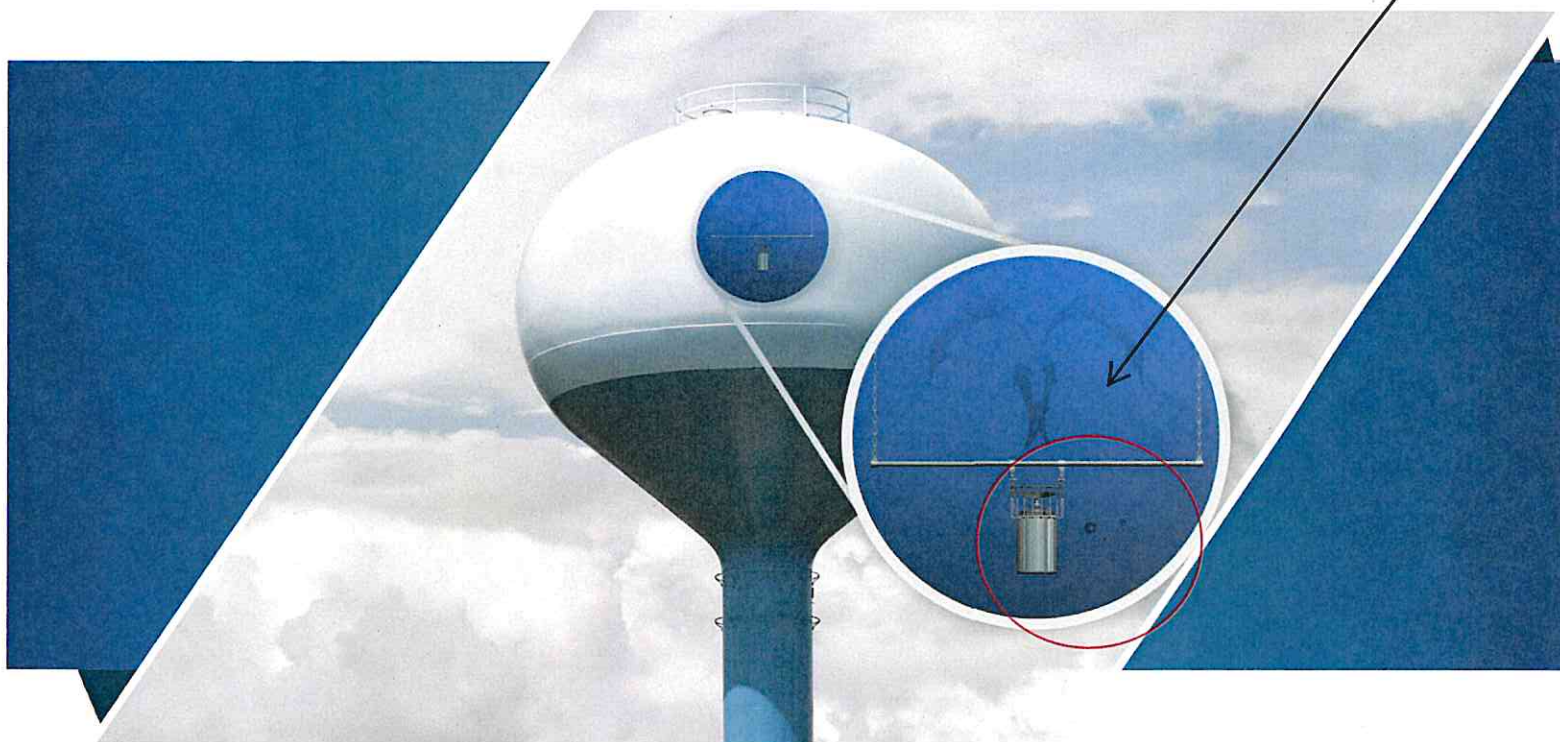
Catalog and proposal drawings, bulletins, and other accompanying literature are solely for the purpose of general style, arrangement and approximate dimensions. Seller may make any changes Seller deems necessary or desirable.
9. Insurance

We have made no allowances for special insurance requirements including but not limited to "Waiver of Subrogation", "Form GC2010", liquidated damages, or anything beyond what is specifically spelled out as being included herein. We reserve the right to amend our offering for anything required outside of the specific items/services spelled out as being included. An exception must be in writing and authorized by Gasvoda & Associates.
10. Start Up

NO START UP WILL BE MADE PRIOR TO 100% PAYMENT. Warranty is invalid without authorized start up.



CertiSafe™ Mixers



BENEFITS OF A POWERFUL, ACTIVE MIXER

- Improves water quality
- Eliminates ice formation
- Minimizes residual loss
- Reduces thermal and chemical stratification
- Reduces differences in water taste and odor
- Reduces nitrification risk in chloraminated water
- Lowers the rate of disinfection by-product (DBP)
- Lowers the rate of sediment accumulation



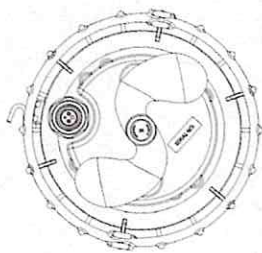
UNIT SPECIFICATIONS

| | | | |
|-------------------------|---|--|--|
| Sizes Available | 1/2HP, 3/4HP, 1HP and 2HP | | |
| Electrical Requirements | 120V, single phase, 60Hz (1/2HP, 3/4HP and 1 HP) 208-240V, single phase, 60Hz (3/4HP, 1HP and 2HP) | | |
| Lubrication | Food-grade mineral oil | | |
| Cord Lengths | Stub (32 in.), 50 ft., 100 ft., 200 ft. | | |
| Amps | 1/2HP, 120V - 5.7 3/4HP, 120V - 7 | 3/4HP 208-240V - 3.5 1HP 120V - 9.1 | 1HP 208-240V - 4.5 2HP 208-240V - 9 |
| Warranty | 3 years (applies to mixer, mount & control panel) Optional extended warranty available | | |

UNIT DIMENSIONS

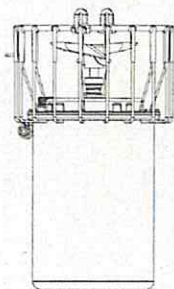
1/2, 3/4, 1 and 2HP

Unit Top



9.5 in. diameter

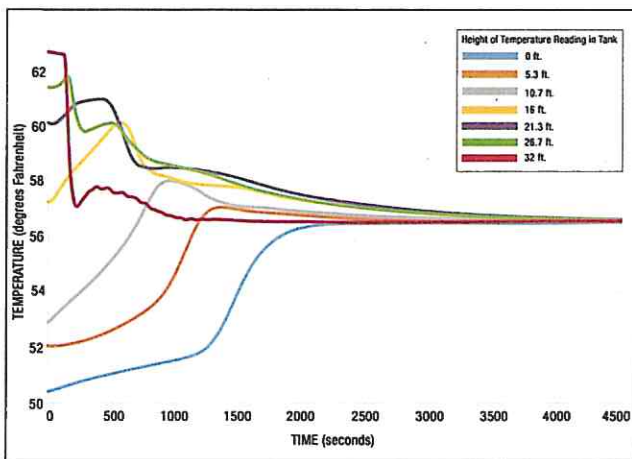
Unit Side



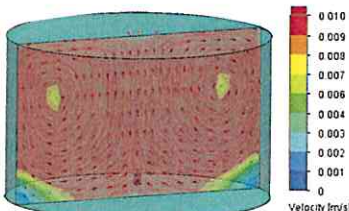
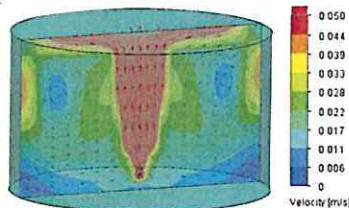
17 1/2 in.
Height

MIXING CAPABILITIES

Computational fluid dynamics (CFD) and test results using a 3400C61 CertiSafe™ mixer to mix a .5 million gallon tank.



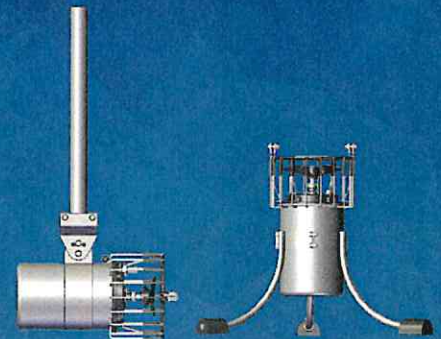
Results from thermal testing shows all layers of the tank converged within 40 minutes



CFD indicating tank can be thoroughly mixed over time

MOUNTING

Install Kasco CertiSafe™ mixers in elevated and ground storage tanks with the available floor mount, pipe mount and suspended mounting options.



Pipe Mount

Floor Mount

CONTROL & MONITORING

UL LISTED CS-100 (120Volt) and CS-200 (230Volt) control panels are designed for easy installation and operation. Both include an H-O-A operator switch, LED indicator lights, SCADA I/O for remote control and monitoring, and automatic shut off feature if tank level drops below operating level.



Kasco®

Moving Water Forward, Since 1968

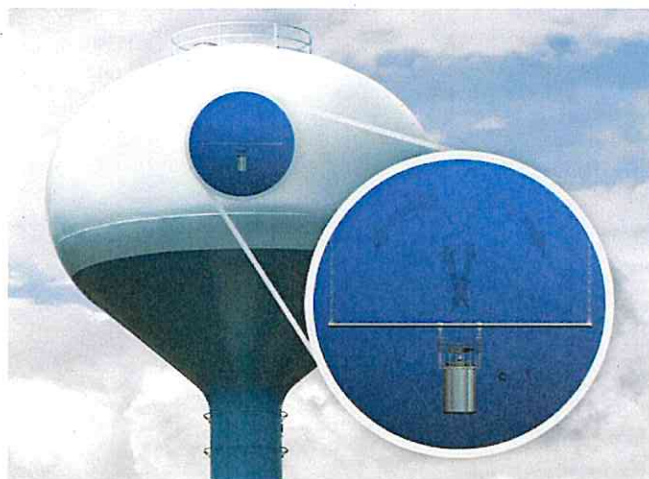
kascomarine.com

© Kasco Marine, Inc 05/2019

800 Deere Rd. Prescott, WI 54021 • 715-262-4488 • sales@kascomarine.com • www.kascomarine.com

CertiSafe Tank Mixer Series C61

Models 2400, 3400, 4400 and 8400



Certified to
NSF/ANSI 61 & 372



BENEFITS OF A POWERFUL ACTIVE MIXER

- Reduces thermal & chemical stratification
- Minimizes residual loss
- Reduces differences in water taste/odor
- Reduces nitrification risk in chloraminated water
- Lowers rate of disinfection by-product (DBP)
- Prevents ice damage and corrosion inside tanks
- Lowers the rate of sediment accumulation

Features

- NSF 61 / ANSI 372 certified
- ETL Listed to UL and CSA standards
- Shippable by FedEx
- Operates to a depth of 50ft
- 3 year warranty on all models, mounts and control panels
- Optional 5 year warranty

Motor Unit

- Available in 120V and 240V, 60Hz, single phase, 1750 RPM
- Two long life bearings
- Thermal overload protection
- Two, fully unitized carbon ceramic mechanical seals
- 300 series austenitic stainless steel housing with domed stainless-steel motor top, and protective coated cage / prop guard

Power Cord

- SJTOW or SJTOOW UL, CSA and NEC approved underwater rated cable
- 3 wire cable
- Available in 50 ft., 100 ft., or 200 ft. cable lengths
- IP68 submersible quick disconnect on 12AWG and larger cords

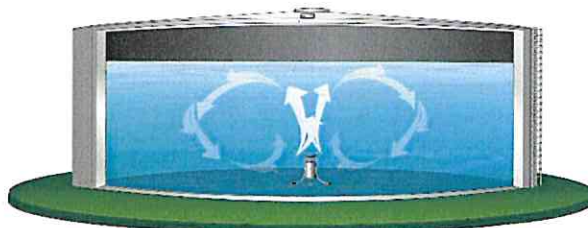
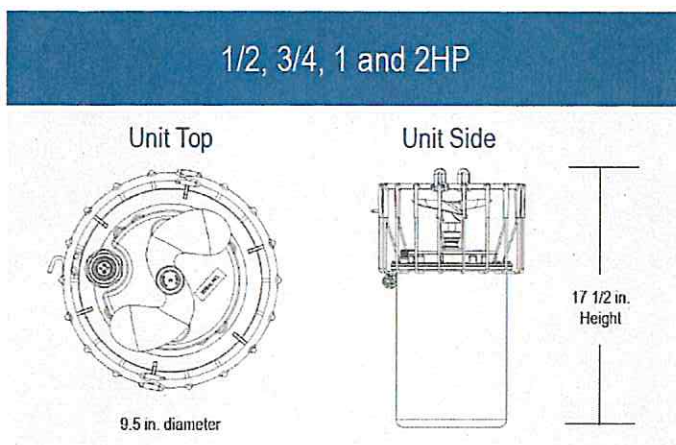
Control Panel Options

- UL listed for US and Canada
- UL type 3R/4X weatherproof enclosure
- SCADA I/O for motor control and monitor
- For more detail, reference the CS-100 and CS-200 specification sheet

Mounting Options

- Floor, pipe and suspended mount options developed for elevated and ground potable water applications
- For more detail, reference the mount specification sheet

UNIT DIMENSIONS



KASCO CERTISAFE MIXER SPECIFICATIONS

| TANK SIZE | SUPPLY VOLTAGE/ PHASE/Hz | HP | MIXER MODEL | CON- TROL CENTER | CABLE LENGTH (FT.) | CABLE GAUGE | MOUNTING | AMPS | LOCK ROTOR AMPS | THRUST (LBS.) | PART NUMBER | SHIPPING WEIGHT |
|------------|--------------------------|-----|-----------------------|------------------|--------------------|-------------|----------|------|-----------------|---------------|-------------|-----------------|
| Up to .5MG | 120/1/60 | 1/2 | 2400 Municipal Series | Optional | 50 | 16 | Optional | 5.7 | 12 | 29 | 2400C61050 | 41 |
| | | | | | 100 | 14 | | | | | 2400C61100 | 47 |
| | | | | | 200 | 12 | | | | | 2400C61200 | 69 |
| Up to 2MG | 120/1/60 | 3/4 | 3400 Municipal Series | Optional | 50 | 16 | Optional | 7 | 18 | 36 | 3400C61050 | 45 |
| | | | | | 100 | 14 | | | | | 3400C61100 | 51 |
| | | | | | 200 | 12 | | | | | 3400C61200 | 73 |
| | 240/1/60 | 3/4 | 3400 Municipal Series | Optional | 50 | 16 | Optional | 3.5 | 9 | 36 | 3400HC61050 | 44 |
| | | | | | 100 | 14 | | | | | 3400C61100 | 51 |
| | | | | | 200 | 12 | | | | | 3400C61200 | 72 |
| Up to 4MG | 120/1/60 | 1 | 4400 Municipal Series | Optional | 50 | 16 | Optional | 9.1 | 40 | 41 | 4400C61050 | 45 |
| | | | | | 100 | 14 | | | | | 4400C61100 | 51 |
| | | | | | 200 | 12 | | | | | 4400C61200 | 73 |
| | 208-240 1/60 | 1 | 4400 Municipal Series | Optional | 50 | 16 | Optional | 4.5 | 20 | 41 | 4400HC61050 | 44 |
| | | | | | 100 | 14 | | | | | 4400HC61100 | 51 |
| | | | | | 200 | 12 | | | | | 4400HC61200 | 72 |
| Over 4MG | 208-240 1/60 | 2 | 8400 Municipal Series | Optional | 50 | 16 | Optional | 9 | 40 | 56 | 8400C61050 | 61 |
| | | | | | 100 | 14 | | | | | 8400C61100 | 74 |
| | | | | | 200 | 12 | | | | | 8400C61200 | 88 |

800 Deere Rd. Prescott, WI 54021 • 715-262-4488 • sales@kascomarine.com • www.kascomarine.com

CS-150 Kasco CertiSafe™ Control Panel

For 2400C61, 3400C61 & 4400C61 Mixers



OVERVIEW

The model CS-150 is a 120Vac, 60hz, single phase UL listed control panel engineered to operate Kasco C61 CertiSafe™ tank mixers. Designed for easy installation and operation with included GFCI circuit breaker, H-O-A control switch, indicator LEDs, Low water inhibit, and SCADA I/O for remote operation and monitoring.

INCLUDED

- 20amp, single pole, GFCI 6ma trip circuit breaker
- Motor contactor: 1hp, 120Vac motor load rated
- Green LED running pilot light
- Red LED Fault pilot light
- H-O-A switch (Hand-Off-Auto)
 - Hand mode operates the mixer continuously (local control)
 - Auto mode operates the mixer from remote SCADA input
- Interface for remote SCADA mixer start/stop control signal (H-O-A Auto mode)
- Low water inhibit: Inhibit mixer operation if tank level drops below operating level
- Low water inhibit sensor adjustment tool
- 4-20ma motor current output (to SCADA) for monitoring motor status and fault condition
- Dry contacts (to SCADA) for: H-O-A in Hand, H-O-A in Auto, Mixer Running, & Mixer Fault
- Auxiliary interlock input for local low tank level inhibit
- UL508A listed control panel for US and Canada
- UL type rated 4X/3R nonmetallic enclosure with pad lockable latch, and integral mounting feet.
- Detailed wiring schematic with field terminal identification.

OPTIONAL

- 316 Stainless steel enclosure (non-stocked, built per order)

REQUIRED

- 20amp feed breaker required and disconnect switch if required (supplied by others)
- Auxiliary interlock input: if utilized, the terminal jumper is replaced with a dry contact relay closure
- Remote SCADA start/stop input requires a dry contact relay closure

800 Deere Rd. Prescott, WI 54021 • 715-262-4488 • sales@kascomarine.com • www.kascomarine.com

CS-100 Kasco CertiSafe™ Control Panel

For 2400C61, 3400C61 & 4400C61 Mixers



OVERVIEW

The model CS-100 is a 120Vac, 60hz, single phase UL listed control panel engineered to operate Kasco C61 CertiSafe™ tank mixers. Designed for easy installation and operation with included H-O-A control switch, indicator LEDs, Low water inhibit, and SCADA I/O for remote operation and monitoring.

INCLUDED

- 20amp single pole circuit breaker
- Motor contactor: 1hp, 120Vac motor load rated
- Green LED running pilot light
- Red LED Fault pilot light
- H-O-A switch (Hand-Off-Auto)
 - Hand mode operates the mixer continuously (local control)
 - Auto mode operates the mixer from remote SCADA input
- Interface for remote SCADA mixer start/stop control signal (H-O-A Auto mode)
- Low water inhibit: Inhibit mixer operation if tank level drops below operating level
- Low water inhibit sensor adjustment tool
- 4-20ma motor current output (to SCADA) for monitoring motor status and fault condition
- Auxiliary interlock input for local low tank level inhibit
- UL508A listed control panel for US and Canada
- UL type rated 4X/3R nonmetallic enclosure with pad lockable latch, and integral mounting feet.
- Detailed wiring schematic with field terminal identification.

REQUIRED

- 20amp GFCI feed breaker required (supplied by others)
- Auxiliary interlock input: if utilized, the terminal jumper is replaced with a dry contact relay closure
- Remote SCADA start/stop input requires a dry contact relay closure

800 Deere Rd. Prescott, WI 54021 • 715-262-4488 • sales@kascomarine.com • www.kascomarine.com

CS-200 Kasco CertiSafe™ Control Panel

For 3400HC61, 4400HC61, 8400C61 & 5.1C61 Mixers



OVERVIEW

The model CS-200 is a 240Vac, 60hz, single phase UL listed control panel engineered to operate Kasco C61 Certisafe™ tank mixers. Designed for easy installation and operation with included H-O-A control switch, indicator LEDs, low water inhibit, and SCADA I/O for remote operation and monitoring.

INCLUDED

- 30amp 2pole circuit breaker
- Motor contactor: 5hp, 240Vac motor load
- Green LED running pilot light
- Red LED Fault pilot light
- H-O-A switch (Hand-Off-Auto)
 - Hand mode operates the mixer continuously (local control)
 - Auto mode operates the mixer from remote SCADA input
- Interface for remote SCADA mixer start/stop control signal (H-O-A Auto mode)
- Low water inhibit: Inhibit mixer operation if tank level drops below operating level
- Low water inhibit sensor adjustment tool
- 4-20ma motor current output (to SCADA) for monitoring motor status and fault condition
- Auxiliary interlock input for local low tank level inhibit
- UL508A listed control panel for US and Canada
- UL type rated 4X/3R nonmetallic enclosure with pad lockable latch, and integral mounting feet
- Detailed wiring schematic with field terminal identification

REQUIRED

- 40amp GFCI feed breaker required (supplied by others)
- Auxiliary interlock input: if utilized, the terminal jumper is replaced with a dry contact relay closure
- Remote SCADA start/stop input requires a dry contact relay closure

800 Deere Rd. Prescott, WI 54021 • 715-262-4488 • sales@kascomarine.com • www.kascomarine.com

CS-250 Kasco CertiSafe™ Control Panel

For 3400HC61, 4400HC61, 8400C61 & 5.1C61 Mixers



OVERVIEW

The model CS-250 is a 240Vac, 60hz, single phase UL listed control panel engineered to operate Kasco C61 Certisafe™ tank mixers. Designed for easy installation and operation with included GFCI circuit breaker H-O-A control switch, indicator LEDs, low water inhibit, and SCADA I/O for remote operation and monitoring.

INCLUDED

- 30amp, 2pole, GFCI 6ma trip circuit breaker
- Motor contactor: 5hp, 240Vac motor load
- Green LED running pilot light
- Red LED Fault pilot light
- H-O-A switch (Hand-Off-Auto)
 - Hand mode operates the mixer continuously (local control)
 - Auto mode operates the mixer from remote SCADA input
- Interface for remote SCADA mixer start/stop control signal (H-O-A Auto mode)
- Low water inhibit: Inhibit mixer operation if tank level drops below operating level
- Low water inhibit sensor adjustment tool
- 4-20ma motor current output (to SCADA) for monitoring motor status and fault condition
- Dry contacts (to SCADA) for: H-O-A in Hand, H-O-A in Auto, Mixer Running, & Mixer Fault
- Auxiliary interlock input for local low tank level inhibit
- UL508A listed control panel for US and Canada
- UL type rated 4X/3R nonmetallic enclosure with pad lockable latch, and integral mounting feet
- Detailed wiring schematic with field terminal identification

OPTIONAL

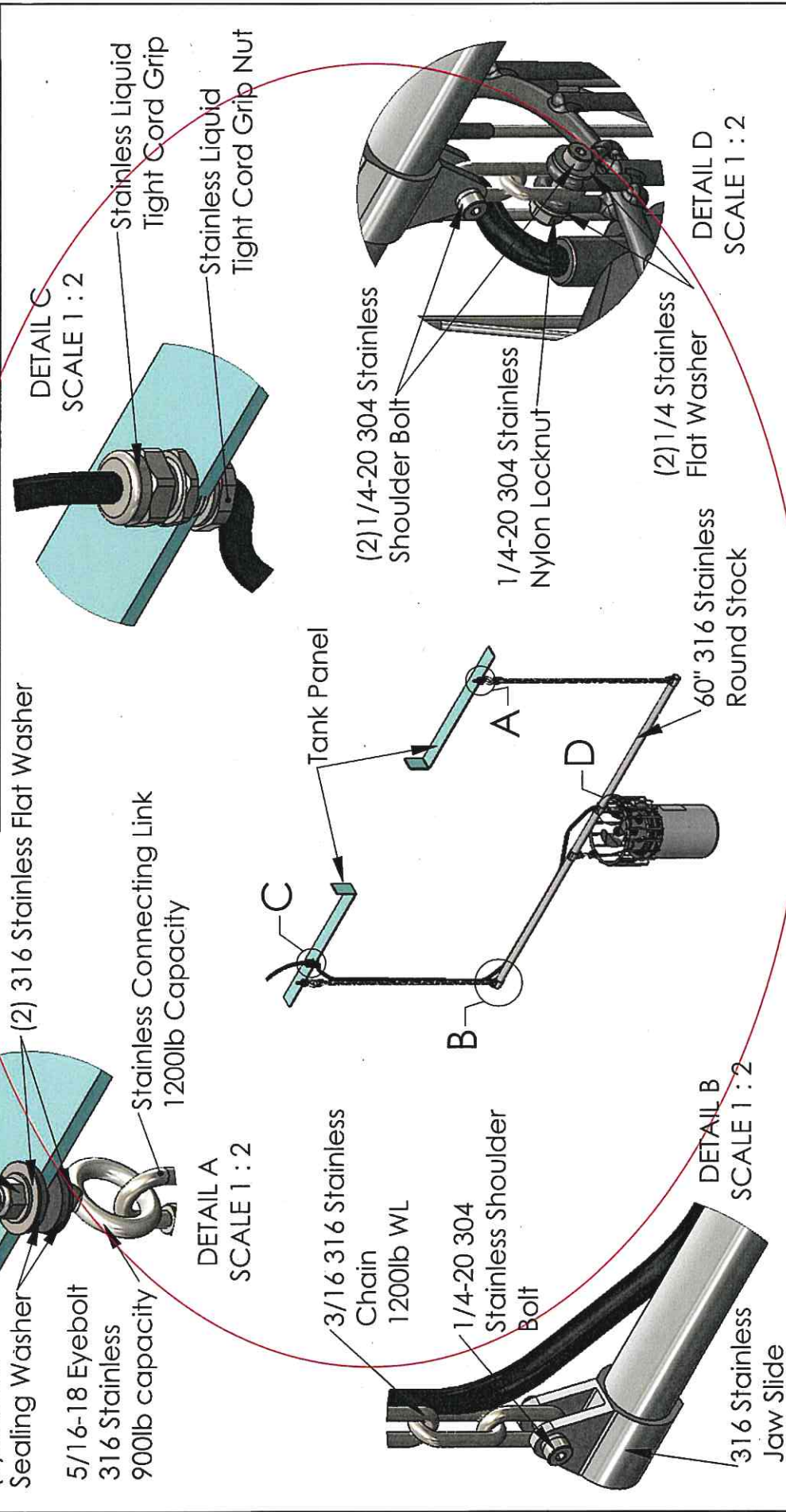
- 316 Stainless steel enclosure (non-stocked, built per order)

REQUIRED

- 40amp feed breaker required and disconnect switch if required (supplied by others)
- Auxiliary interlock input: if utilized, the terminal jumper is replaced with a dry contact relay closure
- Remote SCADA start/stop input requires a dry contact relay closure

| REV. | ECO# | DESCRIPTION | DR'N BY. | DATE | DES ENG | CHK BY |
|------|------|---------------------------|----------|---------|---------|--------|
| 1 | | Certsafe Suspension Mount | TED | 12/5/17 | TED | |

| REV. | ECO# | DESCRIPTION | DR'N BY. | DATE | DES ENG | CHK BY |
|------|------|---------------------------|----------|---------|---------|--------|
| 1 | | Certsafe Suspension Mount | TED | 12/5/17 | TED | |



DO NOT SCALE DRAWING

C.A.D. GENERATED DRAWING

THIS DOCUMENT HAS BEEN ISSUED FOR ENGINEERING INFORMATIONAL PURPOSES ONLY. ANY REVISIONS TO THE CONTENT OF THIS DOCUMENT MUST BE INCORPORATED INTO THE ORIGINAL CAD FILE.

UNLESS OTHERWISE SPECIFIED, DIMENSIONS ARE IN INCHES. DIMENSIONS IN [] ARE MILLIMETERS. TOLERANCES ON:

.X ± .02 [.508] .XX ± .010 [.254]

.XXX ± .005 [.127] ANGULAR ± 0.5°

THIS DRAWING CONTAINS PROPRIETARY INFORMATION AND SHALL NOT BE USED, REPRODUCED OR DISTRIBUTED WITHOUT THE PRIOR WRITTEN CONSENT OF KASCO MARINE, INCORPORATED

MATERIAL:

FINISH:

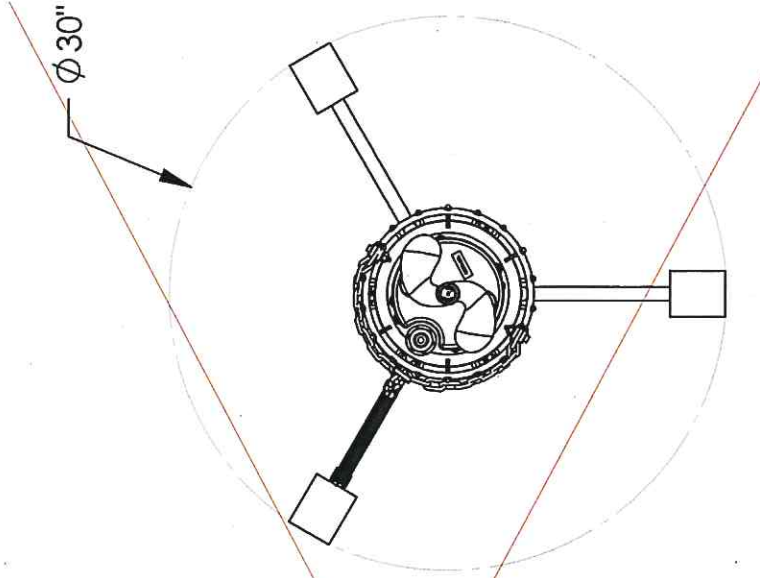
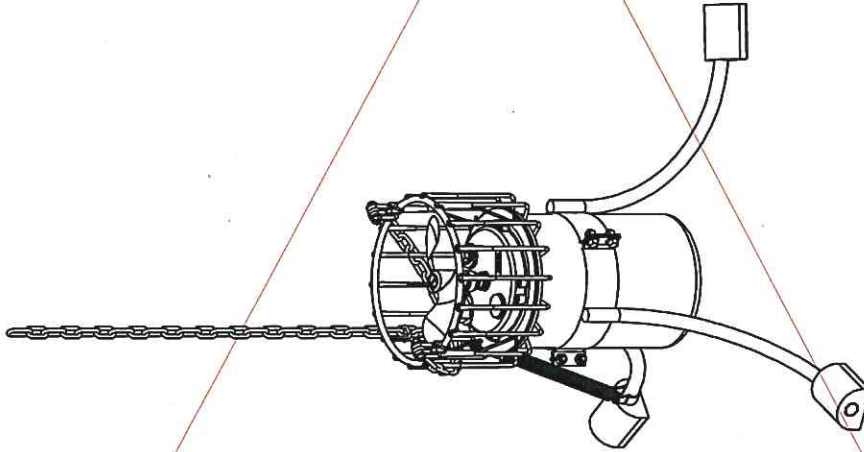
TITLE: **SM-100**

Kasco
Marine, Inc.

800 DEERE ROAD
PRESCOTT, WI 54021-1241

SCALE: 1:20 SHEET 1 OF 1

| DWG. NO. | | RM-100 | | | |
|----------|------|-----------------|---------|------|--------|
| REV. | ECO# | DESCRIPTION | DR'N BY | DATE | CHK BY |
| 1 | | INITIAL RELEASE | | | |



DO NOT SCALE DRAWING
C.A.D. GENERATED DRAWING
THIS DOCUMENT HAS BEEN ISSUED
FOR ENGINEERING INFORMATIONAL
PURPOSES ONLY. ANY REVISIONS
TO THE CONTENT OF THIS DOCUMENT
MUST BE INCORPORATED INTO THE
ORIGINAL CAD FILE.

THIRD ANGLE PROJECTION



UNLESS OTHERWISE SPECIFIED
DIMENSIONS ARE IN INCHES.
DIMENSIONS IN [] ARE MILLIMETERS.
TOLERANCES ON:

.X ± .02 [.508] .XX ± .010 [.254]

.XXX ± .005 [.127] ANGULAR ± 0.5°

THIS DRAWING CONTAINS PROPRIETARY
INFORMATION AND SHALL NOT BE USED,
REPRODUCED OR DISTRIBUTED WITHOUT
THE PRIOR WRITTEN CONSENT OF
KASCO MARINE, INCORPORATED

MATERIAL:
Mixed

FINISH:
X

TITLE:
Certisafe Floor Mount

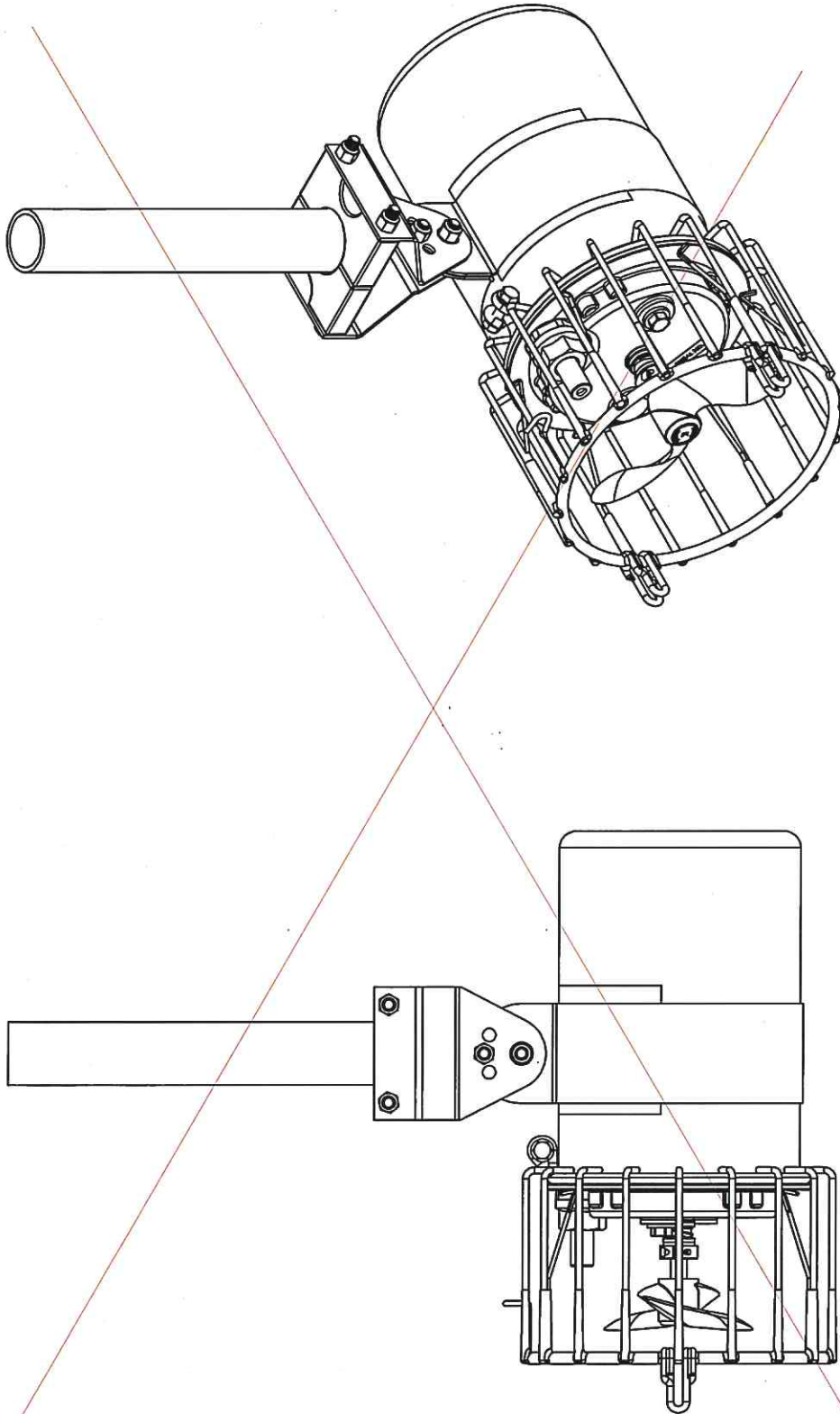
Kasco®

800 DEERE ROAD
PRESCOTT, WI 54021-1241

SCALE: 1:10 SHEET 1 OF 1

RM-100

| DWG. NO. | | PM-100 | | | |
|----------|-------|-----------------|---------|------------|--------|
| REV. | ECO # | DESCRIPTION | DR'N BY | DATE | CHK BY |
| 1 | | INITIAL RELEASE | TED | 11/06/2018 | |



DO NOT SCALE DRAWING
C.A.D. GENERATED DRAWING
THIS DOCUMENT HAS BEEN ISSUED
FOR ENGINEERING INFORMATION
PURPOSES ONLY. ANY REVISIONS
TO THE CONTENT OF THIS DOCUMENT
MUST BE INCORPORATED INTO THE
ORIGINAL CAD FILE.

THIRD ANGLE PROJECTION



UNLESS OTHERWISE SPECIFIED
DIMENSIONS ARE IN INCHES.
DIMENSIONS IN [] ARE MILLIMETERS.
TOLERANCES ON:

.X \pm .02 [.508] .XX \pm .010 [.254]

.XXX \pm .005 [.127] ANGULAR \pm 0.5°

THIS DRAWING CONTAINS PROPRIETARY
INFORMATION AND SHALL NOT BE USED,
REPRODUCED OR DISTRIBUTED WITHOUT
THE PRIOR WRITTEN CONSENT OF
KASCO MARINE, INCORPORATED

MATERIAL:
Stainless Steel

FINISH:

TITLE:
PM-100 2400C61

Kasco[®]

800 DEERE ROAD
PRESCOTT, WI 54021-1241

SCALE: 1:5 SHEET 1 OF 1

PM-100

**MUNICIPAL SERVICES COMMITTEE MEETING
AGENDA ITEM SUMMARY SHEET**

AGENDA ITEM DESCRIPTION

Discuss the Surplus of One (1) 2005 Ford F-550 Dump Truck

COMMITTEE REVIEW

- ☐ Finance/Administration
☒ Municipal Services
☐ Public Safety

Meeting Date:

September 28, 2020

- | | |
|---|---|
| <input type="checkbox"/> Discussion Only | <input checked="" type="checkbox"/> Approval of Staff Recommendation (for consideration by Village Board at a later date) |
| <input type="checkbox"/> Seeking Feedback | <input type="checkbox"/> Approval of Staff Recommendation (for <u>immediate</u> consideration by Village Board) |
| <input type="checkbox"/> Regular Report | <input type="checkbox"/> Report/documents requested by Committee |

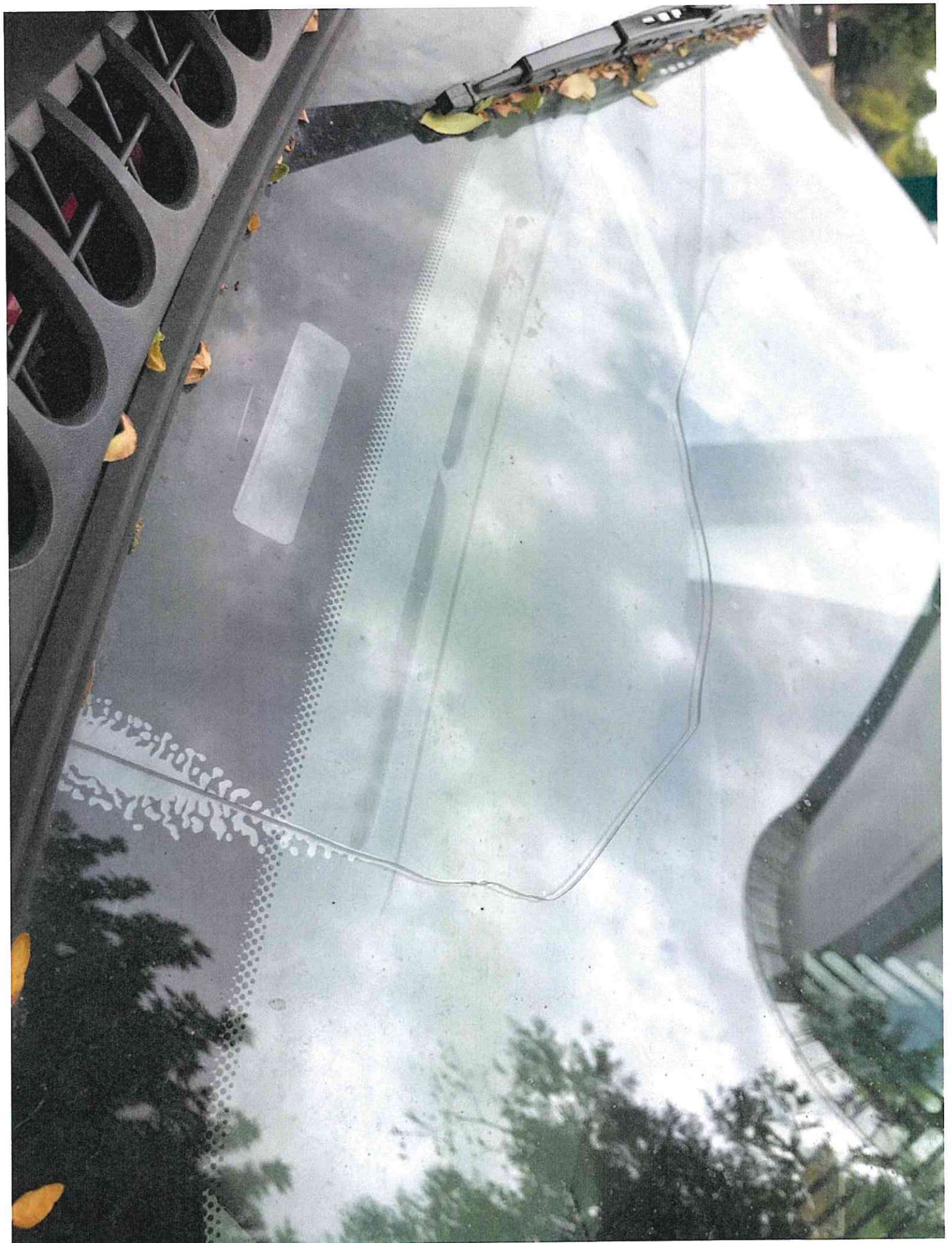
BACKGROUND

The Village has recently purchased two (2) new Ford F-350 service body trucks for the Public Works fleet. The Public Works Department is recommending the Village declare a 2005 Ford F-550 1-ton dump truck surplus. The truck has 62,898 miles and is identified by VIN # 1FDAF57Y95EB79401. This vehicle is beyond its useful life expectancy and is showing a lot of wear and tear. The vehicle has significant rusting of the truck cab, the dump bed is rusted out, the hydraulic lift arm has seized, the truck bed no longer lifts safely, electrical issues with the radio, wipers and strobes that no longer work, a cracked windshield, and the driver's seat needs to be reupholstered. The repair cost to make the truck safe and usable are beyond the anticipated value of the vehicle. Staff would present an ordinance before the Village Board on October 12, 2020 for final consideration if the Committee recommends that the vehicle be declared surplus.

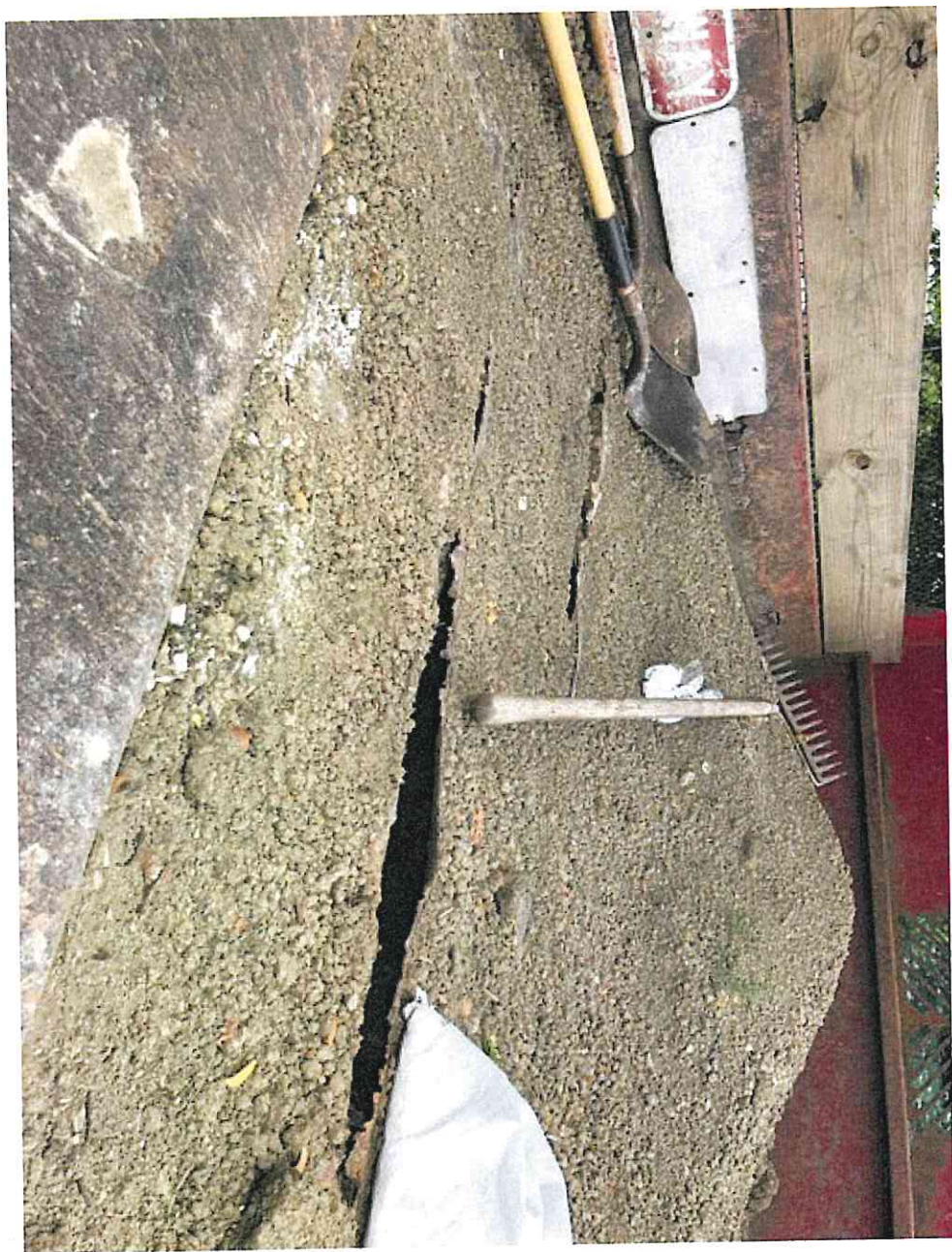
STAFF RECOMMENDATION

Staff recommends declaring the 2005 F-550 dump truck surplus.

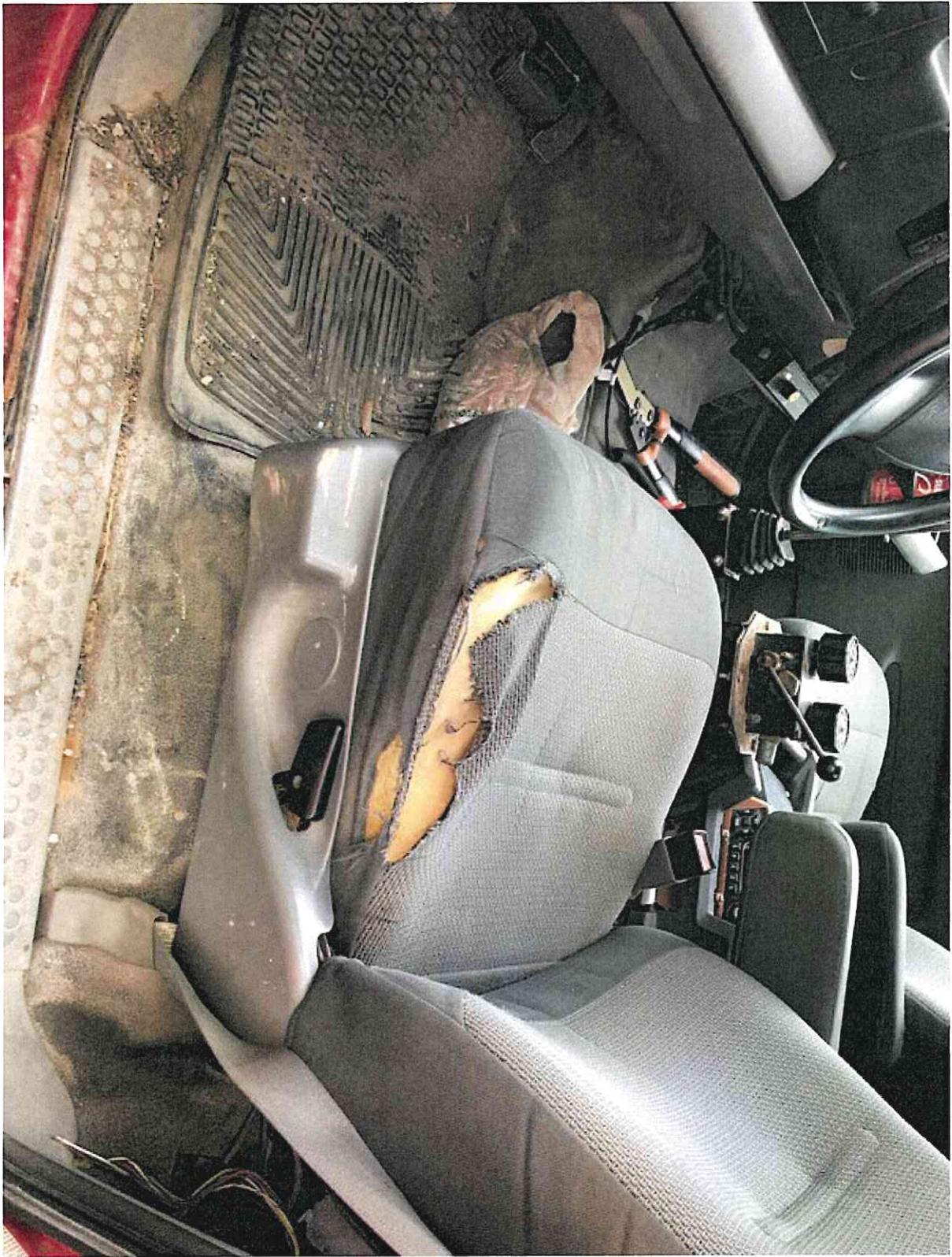












MUNICIPAL SERVICES COMMITTEE MEETING
AGENDA ITEM SUMMARY SHEET

AGENDA ITEM DESCRIPTION

Discuss the Surplus of One (1) 2006 Ford F-350 Service Body Truck

COMMITTEE REVIEW

- ☐ Finance/Administration
☒ Municipal Services
☐ Public Safety

Meeting Date:

September 28, 2020

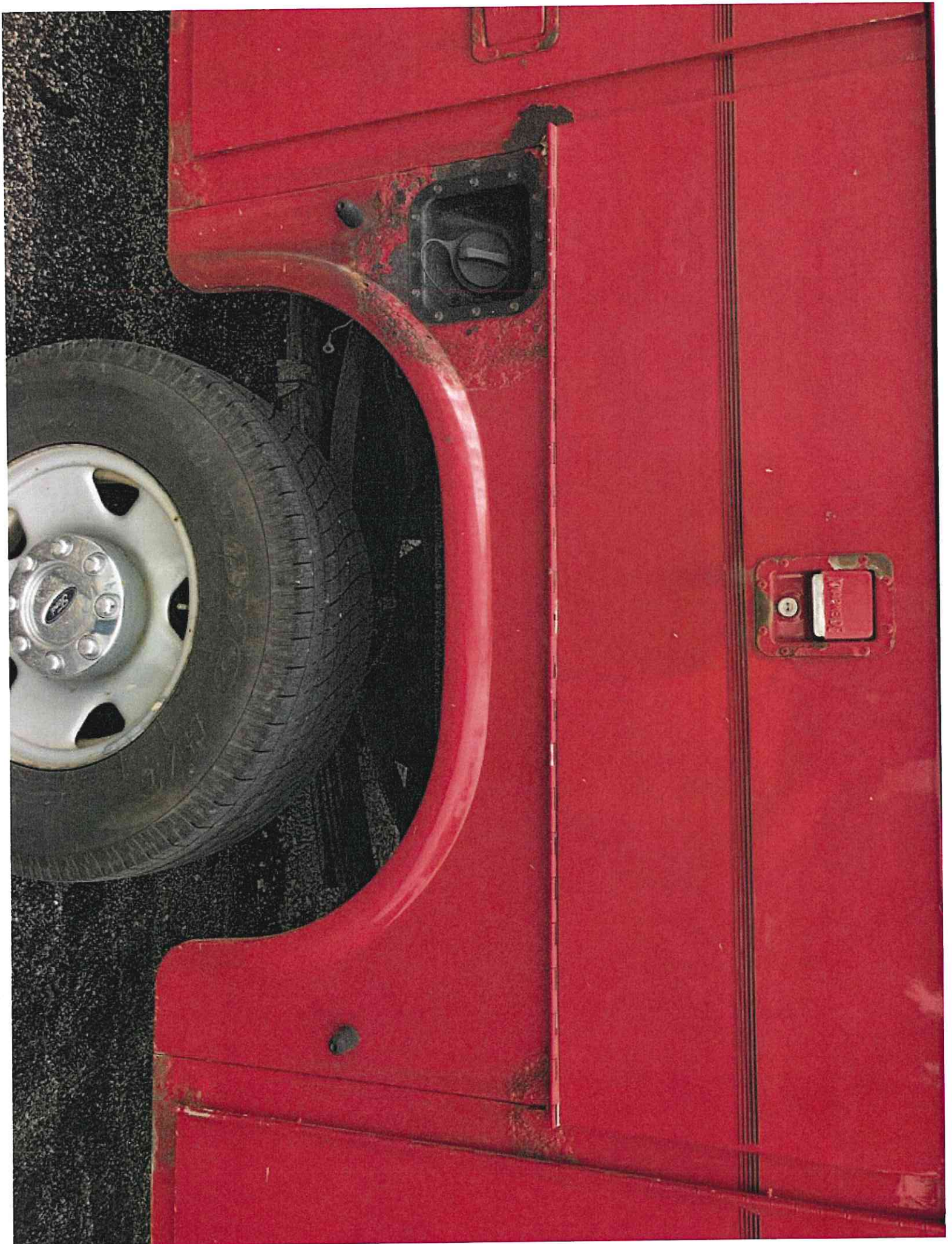
- | | |
|---|---|
| <input type="checkbox"/> Discussion Only | <input checked="" type="checkbox"/> Approval of Staff Recommendation (for consideration by Village Board at a later date) |
| <input type="checkbox"/> Seeking Feedback | <input type="checkbox"/> Approval of Staff Recommendation (for <u>immediate</u> consideration by Village Board) |
| <input type="checkbox"/> Regular Report | <input type="checkbox"/> Report/documents requested by Committee |

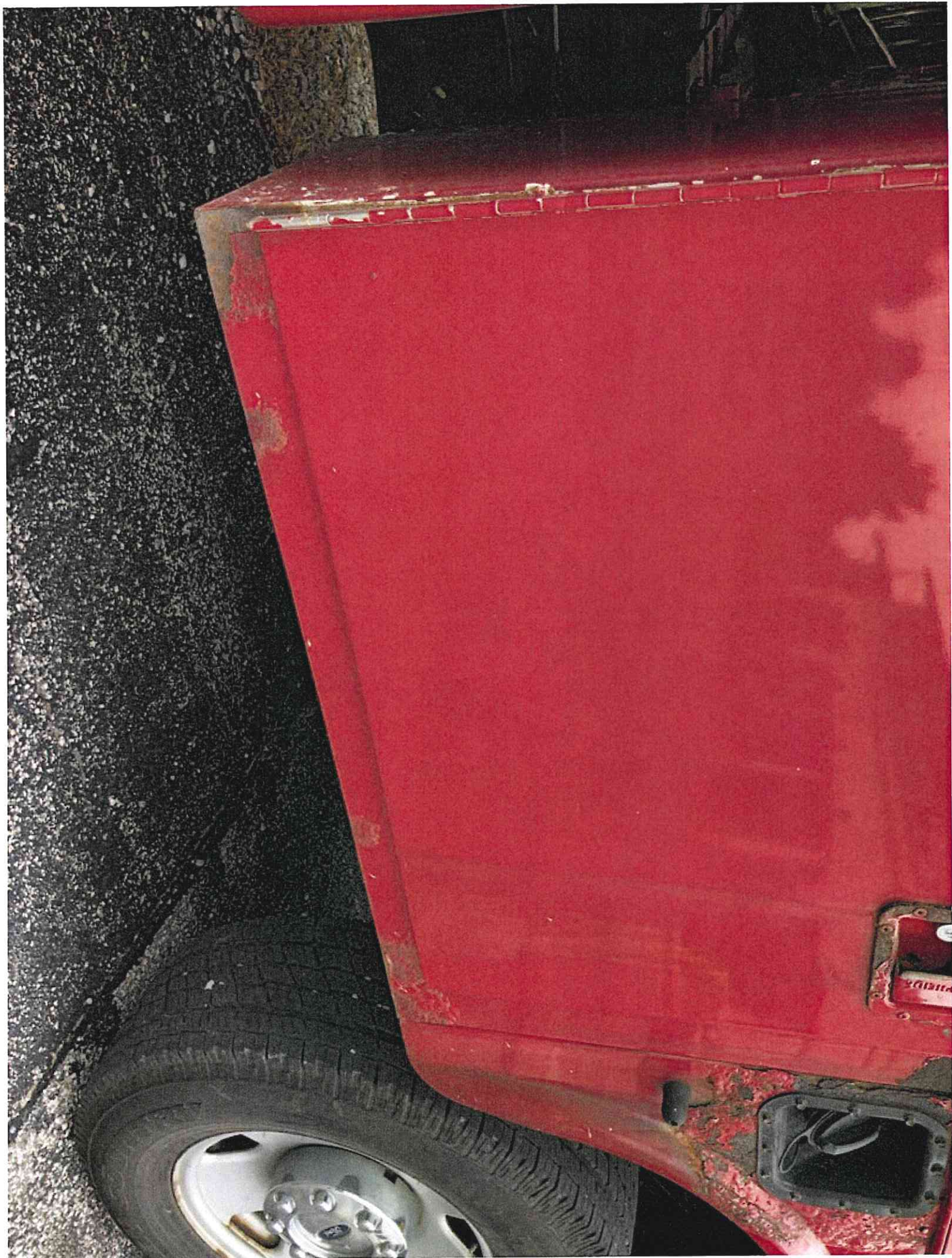
BACKGROUND

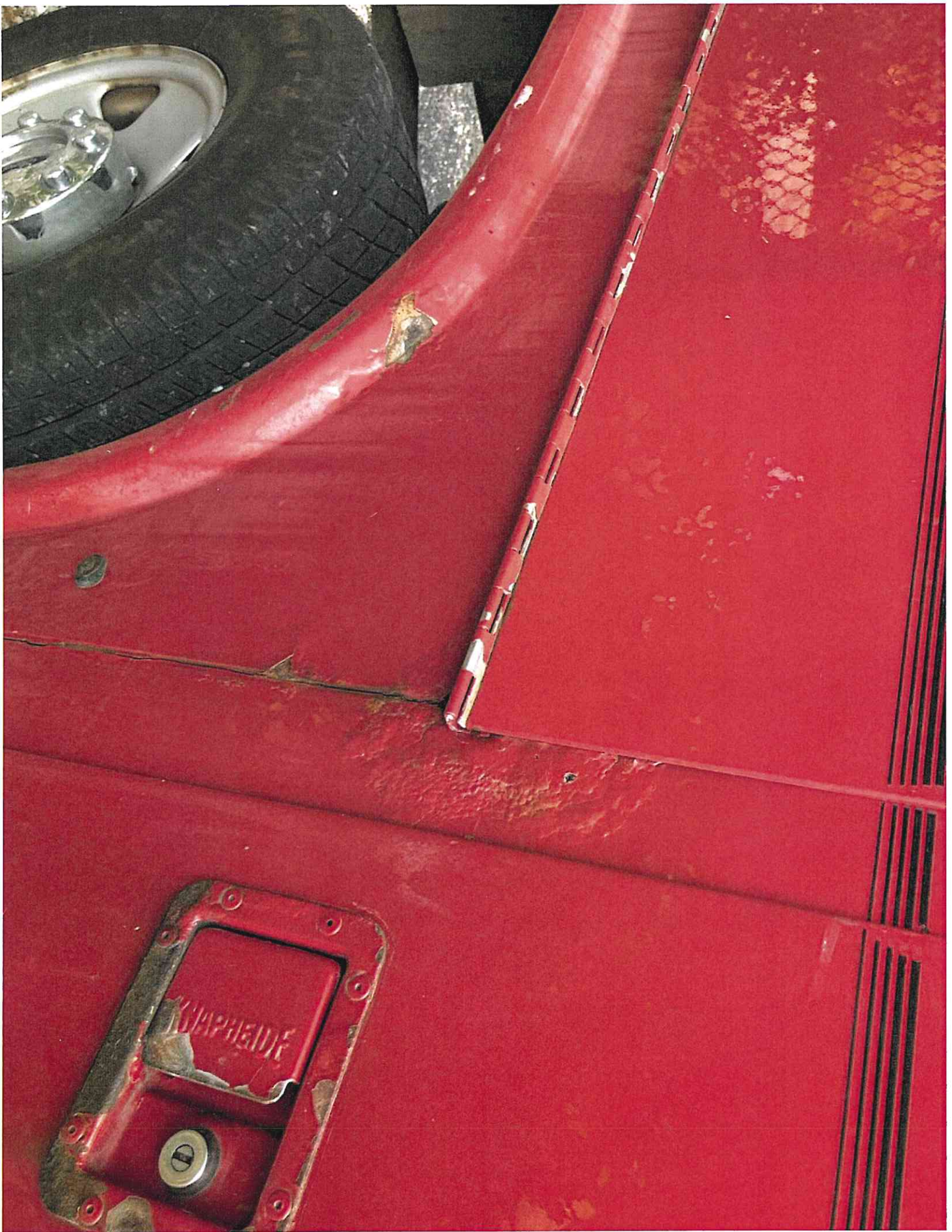
The Village has recently purchased two (2) new Ford F-350 service body trucks for the Public Works fleet. The Public Works Department is recommending the Village declare a 2006 Ford F-350 service body truck surplus. The truck has 125,000 miles and is identified by VIN # 1FDWF31556ED67455. This vehicle is beyond its useful life expectancy and is showing a lot of wear and tear. The vehicle has significant rusting of the truck cab and service body, the rear suspension needs new leaf springs and shackles, the instrument gauges work intermittently, the air conditioning system is failing, and driver's seat needs to be reupholstered. The repair cost to make the truck safe and usable are beyond the anticipated value of the vehicle Staff would present an ordinance before the Village Board on October 12, 2020 for final consideration if the Committee recommends that the vehicle be declared surplus.

STAFF RECOMMENDATION

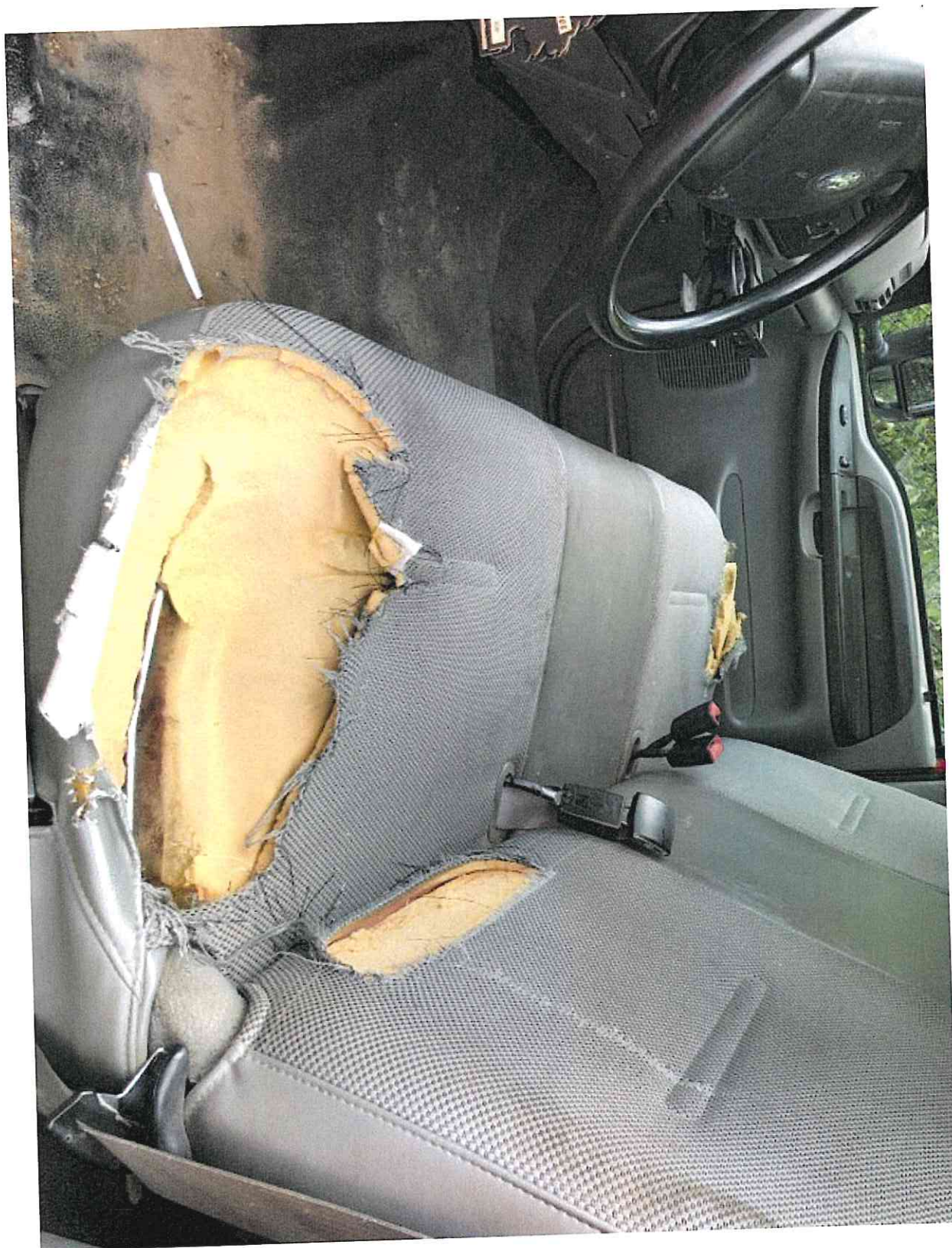
Staff recommends declaring the 2006 F-350 service body truck surplus.







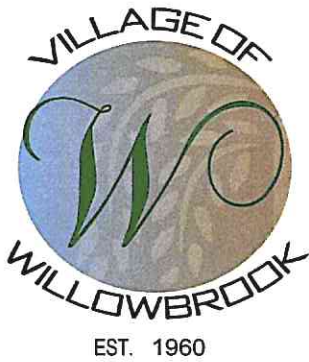




Village of Willowbrook

2020 Recycling Analysis

| Collection Period | Jan. | Feb. | March | April | May | June | July | Aug. | Sept. | Oct. | Nov. | Dec. | Total |
|--------------------------------|--------|--------|--------|--------|--------|--------|--------|--------|--------|--------|--------|--------|--------|
| Total Weights (Tons) | 0.00 | 0.00 | 0.00 | 0.00 | 0.00 | 0.00 | 0.00 | 44.96 | | | | | 44.96 |
| % (Paper Products) | 53.00% | 53.00% | 53.00% | 53.00% | 53.00% | 53.00% | 53.00% | 53.00% | 53.00% | 53.00% | 53.00% | 53.00% | 53.00% |
| Weight (Paper Products) | 0.00 | 0.00 | 0.00 | 0.00 | 0.00 | 0.00 | 0.00 | 23.83 | 0.00 | 0.00 | 0.00 | 0.00 | 23.83 |
| % (Commingled) | 15.00% | 15.00% | 15.00% | 15.00% | 15.00% | 15.00% | 15.00% | 15.00% | 15.00% | 15.00% | 15.00% | 15.00% | 15.00% |
| Weight (Commingled) | 0.00 | 0.00 | 0.00 | 0.00 | 0.00 | 0.00 | 0.00 | 6.74 | 0.00 | 0.00 | 0.00 | 0.00 | 6.74 |
| % (Residue/Contamination) | 32.00% | 32.00% | 32.00% | 32.00% | 32.00% | 32.00% | 32.00% | 32.00% | 32.00% | 32.00% | 32.00% | 32.00% | 32.00% |
| Weight (Residue/Contamination) | 0.00 | 0.00 | 0.00 | 0.00 | 0.00 | 0.00 | 0.00 | 14.39 | 0.00 | 0.00 | 0.00 | 0.00 | 14.39 |
| | | | | | | | | | | | | | |
| | Jan. | Feb. | March | April | May | June | July | Aug. | Sept. | Oct. | Nov. | Dec. | Total |
| Municipal Solid Waste (Tons) | 0.00 | 0.00 | 0.00 | 0.00 | 0.00 | 0.00 | 0.00 | 107.96 | | | | | 107.96 |
| Compost (Yards) | 0.00 | 0.00 | 0.00 | 0.00 | 0.00 | 0.00 | 0.00 | 10.51 | | | | | 10.51 |



Willowbrook

835 Midway Drive
Willowbrook, IL 60527-5549

Phone: (630) 323-8215 Fax: (630) 323-0787 www.willowbrookil.org

MONTHLY REPORT
MUNICIPAL SERVICES DEPARTMENT
August, 2020

Mayor

Frank A. Trilla

Village Clerk

Leroy R. Hansen

Village Trustees

Sue Berglund

Umberto Davi

Terrence Kelly

Michael Mistele

Gayle Neal

Paul Oggerino

**Village
Administrator**

Brian Pabst

Chief of Police

Robert Schaller

**Director of
Finance**

Carrie Dittman

Permits Issued:

| | |
|-----------------|---|
| Buildout | 1 |
| Cables | 4 |
| Concrete | 5 |
| Demo Intr | 1 |
| Drainage | 2 |
| Fence | 2 |
| Inter Rem R | 1 |
| Int Rem C | 1 |
| Modify wall | 1 |
| Plumbing | 1 |
| Patio Canapy | 1 |
| Pavers | 1 |
| Retaining walls | 1 |
| Roof | 8 |
| ReOccupany | 1 |
| Sealcoat | 2 |
| Signs | 2 |
| Skylight | 1 |
| Solar Panels | 1 |
| Sec. System | 1 |
| Temp sign/tent | 2 |
| Vanilla Box | 1 |
| Water Heater | 1 |
| Window/Doors | 5 |

TOTALS 47

Plan Review Deposit Fee 1

Permit Revenue for August, 2020 \$ 19,558.63

Total Revenue Collected for Fiscal YTD \$114,509.57

Total Budgeted Revenue for Fiscal Year 20/21 \$ 295 000.00

Total Percentage of Budgeted Revenue
Collected to Date 38.82%

Certificate of Occupancy, Final 1

Certificate of Occupancy, Temporary 1

Respectfully submitted,

Michael Mertens-Assistant Village Administrator



Proud Member of the
Illinois Route 66 Scenic Byway

MUNICIPAL SERVICES DEPARTMENT

PERMIT REVENUE

Fiscal Year 2020-2021

| MONTH | CURRENT FISCAL YEAR 2020-2021 | PRIOR FISCAL YEAR 2019-2020 |
|---|----------------------------------|--------------------------------|
| MAY | \$ 41,190.44 | \$ 24,660.45 |
| JUNE | \$ 20,616.93 | \$ 18,235.23 |
| JULY | \$ 33,143.57 | \$ 86,968.36 |
| AUGUST | \$ 19,558.63 | \$ 13,262.60 |
| SEPTEMBER | | \$ 18,390.75 |
| OCTOBER | | \$ 59,207.60 |
| NOVEMBER | | \$ 19,078.16 |
| DECEMBER | | \$ 19,940.06 |
| JANUARY | | \$ 145,370.82 |
| FEBRUARY | | \$ 29,837.34 |
| MARCH | | \$ 29,705.09 |
| APRIL | | \$ 146,939.37 |
| COLLECTED REVENUE | \$ 114,509.57 | \$ 611,595.83 |
| BUDGETED REVENUE | \$ 295,000.00 | \$ 280,000.00 |
| REVENUES COLLECTED- (OVER)/UNDER BUDGET | \$ 180,490.43 | \$ (331,595.83) |
| PERCENTAGE OF BUDGETED REVENUE COLLECTED | 38.82% | 218.43% |

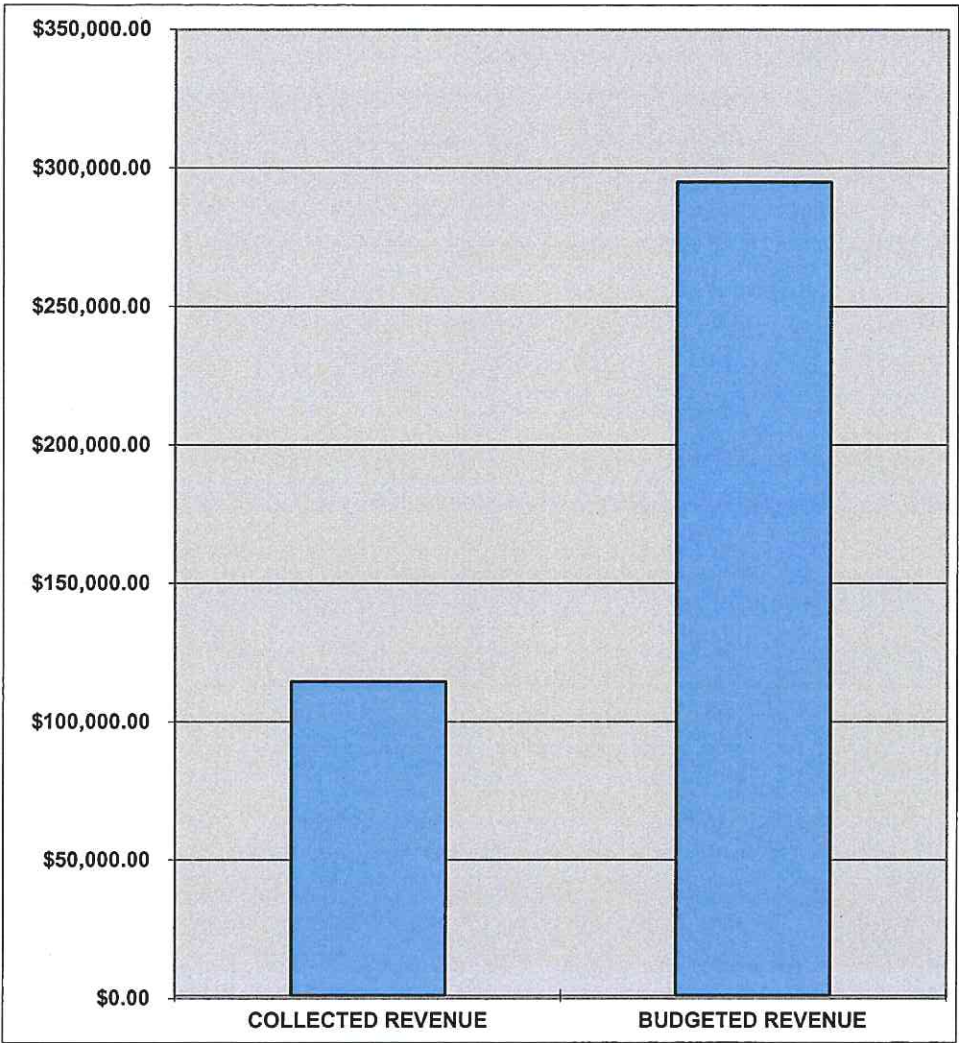
MUNICIPAL SERVICES DEPARTMENT

PERMIT REVENUE

| | Fiscal Year 20-21 | Fiscal Year 19-20 |
|-------------------|-------------------|-------------------|
| COLLECTED REVENUE | \$ 114,509.57 | \$ 611,595.83 |
| BUDGETED REVENUE | \$ 295,000.00 | \$ 280,000.00 |

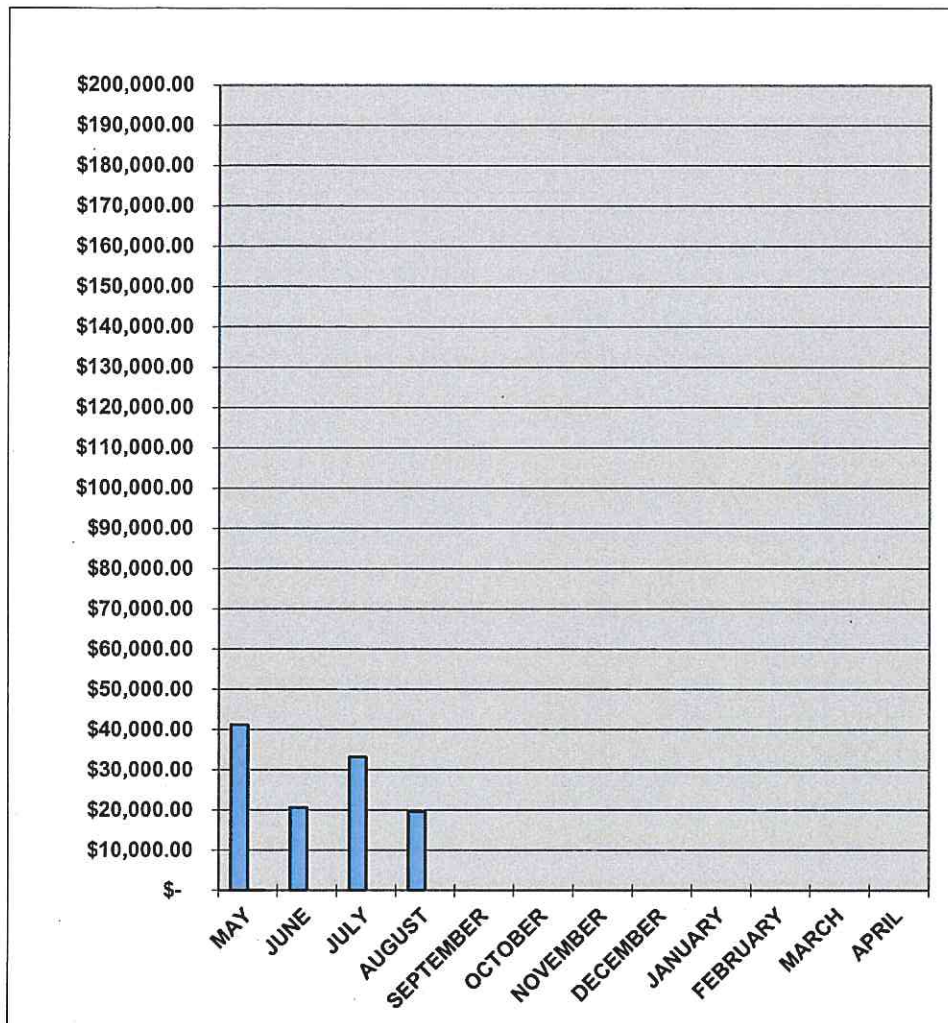
MUNICIPAL SERVICES DEPARTMENT

PERMIT REVENUE



MUNICIPAL SERVICES DEPARTMENT

PERMIT REVENUE



| Permit | Date Issued: | Date Released: | Date Permit Expires: | Name: | Address: | Permit Purpose: | Business Name: | Fee: | RES / COMM: | Valuation: |
|--------|--------------|----------------|----------------------|-------|------------------------------|----------------------|-------------------------|-------------|-------------|---------------|
| 20-143 | 06/09/20 | 08/03/20 | 02/01/22 | | 6353 Meadow Lane | Patio (Concrete) | | \$ 215.00 | R | \$ 6,800.00 |
| 20-230 | 07/29/20 | 08/03/20 | 02/01/22 | | 7675 Kingery | Sealcoat/stripping | Mobil Gas Station | \$ 260.00 | C | |
| 20-237 | 08/03/20 | 08/04/20 | 02/02/22 | | 15W344 Plainfield Road | Skylights/Roof | | \$ 265.00 | R | \$ 120,774.46 |
| 20-233 | 07/30/20 | 08/06/20 | 02/04/22 | | 6522 Rodgers | Windows | | \$ 140.00 | R | \$ 13,534.00 |
| 20-183 | 06/29/20 | 08/06/20 | 02/04/22 | | 6607 Slough St | Solar Panels | | \$ 615.00 | R | \$ 22,382.00 |
| 20-238 | 08/04/20 | 08/06/20 | 02/04/22 | | 7830 Kingery Hwy | Sign | Beyond Storage | \$1,110.00 | C | \$ 8,700.00 |
| 20-241 | 08/06/20 | 08/07/20 | 02/05/22 | | 638 67th Place | Roof | | \$115.00 | R | \$4,000.00 |
| 20-245 | 08/06/20 | 08/07/20 | 02/05/22 | | 635 63rd Street | Retaining Wall | | \$240.00 | R | \$20,000.00 |
| 20-239 | 08/06/20 | 08/07/20 | 02/05/22 | | 215 Chauser Ct | Roof | | \$100.00 | R | \$ 19,484.13 |
| 20-221 | 07/24/20 | 08/11/20 | 03/06/21 | | 403 Honey Locust Ln | Patio Canopy | | \$ 375.00 | R | |
| 20-236 | 07/30/20 | 08/12/20 | 02/10/22 | | 344 Sheridan | Roof | Willow West Condo Assoc | \$ 240.00 | M | \$ 19,880.00 |
| 20-247 | 08/07/20 | 08/12/20 | 02/10/22 | | 7535 Kingery Hwy | Sealcoat parkinglot | Red Roof Inn | \$ 260.00 | C | \$ 5,000.00 |
| 20-213 | 07/17/20 | 08/13/20 | 02/11/22 | | 851 Emerald Court | Water Heater | | \$ 100.00 | R | \$ 1,499.37 |
| 20-248 | 08/07/20 | 08/13/20 | 02/11/22 | | 311 Ridgmoor Ct | Concrete DW | | \$ 290.00 | R | \$ 13,000.00 |
| 20-257 | 08/13/20 | 08/13/20 | 02/11/22 | | 7527 Eleanor Place | Roof | | \$ 100.00 | R | \$ 7,000.00 |
| 20-258 | 08/13/20 | 08/13/20 | 02/11/22 | | 6190 Pinewood Ct #103 | Window/doors | | \$ 190.00 | M | \$ 1,080.60 |
| 20-252 | 08/11/20 | 08/13/20 | 02/11/22 | | 7800 Blackberry Ln | Fence | | \$ 190.00 | R | \$ 5,400.00 |
| 20-246 | 08/07/20 | 08/13/20 | 02/11/22 | | 601 Lake Hinsdale #308 | Modify Walls | | \$ 240.00 | M | \$ 300.00 |
| 20-253 | 08/11/20 | 08/14/20 | 02/12/22 | | 5830 Virginia Ave | Drainage Ditch | | \$ 240.00 | R | \$ 1,750.00 |
| 20-215 | 08/13/20 | 08/17/20 | 02/15/22 | | 650 Willowbrook Pkwy 200/201 | Remodle | Lewaniak WB 200 | \$ 2,143.50 | C | \$ 30,000.00 |
| 20-256 | 08/13/20 | 08/17/20 | 02/15/22 | | 74 W 63rd Street | Vanilla Box | Willowbrook Square | \$ 760.00 | C | \$ 8,000.00 |
| 20-192 | 07/06/20 | 08/17/20 | 02/15/22 | | 38 W 63rd Street | Sign | Chad's Cheesecake | \$ 614.28 | C | \$ 3,780.00 |
| 20-124 | 08/13/20 | 08/18/20 | 02/16/22 | | 6300 Kingery # 216 | Build out | Dentist of Hinsdale | \$ 4,690.35 | C | \$ 500,000.00 |
| 20-191 | 07/02/20 | 08/18/20 | 03/17/21 | | 144 Sunset Ridge Road | Door | | \$ 135.00 | R | \$ 11,624.00 |
| 20-244 | 08/06/20 | 08/18/20 | 02/16/22 | | 7643 Apple Tree Lane | Door | | \$ 140.00 | R | \$ 4,631.00 |
| 20-251 | 08/11/20 | 08/18/20 | 02/16/22 | | 5800 Virginia Ave | Fence | | \$ 190.00 | R | \$ 4,578.00 |
| 20-260 | 08/18/20 | 08/18/20 | 02/16/22 | | 625 Executive Right of Way | Cables | Comcast | NC | C | |
| 20-261 | 08/18/20 | 08/18/20 | 02/16/22 | | 7410 Quincy Right of Way | U/G Bore | AT & T | NC | C | |
| 20-255 | 08/12/20 | 08/19/20 | 02/17/22 | | 536 Ridgemoor Dr | Pavers | | \$ 280.00 | R | \$ 1,500.00 |
| 20-242 | 08/06/20 | 08/19/20 | 02/17/22 | | 6342 Martin Drive | Roof | | \$ 100.00 | R | \$ 7,300.00 |
| 20-259 | 08/17/20 | 08/20/20 | 02/18/22 | | 615 63rd Street | Roof | | \$ 100.00 | R | \$ 14,000.00 |
| 20-231 | 07/30/20 | 08/21/20 | 02/19/22 | | 6301 Martin Drive | Doors/Windows | | \$ 165.00 | R | \$ 18,580.00 |
| 20-263 | 08/18/20 | 08/21/20 | 02/19/22 | | 101 Lake Hinsdale Dr #303 | Bathroom Remodel | | \$ 390.00 | M | \$ 5,000.00 |
| 20-267 | 08/21/20 | 08/21/20 | 02/19/22 | | 6060 Laurel Ln ROW | Cables | Comed | NC | C | |
| 20-268 | 08/21/20 | 08/21/20 | 02/19/22 | | 540 Executive Dr ROW | Cables | Comed | NC | C | |
| 20-275 | 08/25/20 | 08/25/20 | 11/27/20 | | 6048 Clarendon Hills Road | Concrete Pad | | \$ 200.00 | R | |
| 20-274 | 08/24/20 | 08/25/20 | 02/23/22 | | 308 60th Court | Roof | | \$ 100.00 | R | \$ 22,000.00 |
| 20-044 | 02/20/20 | | | | 324 61ST | CANCELLED | | | | |
| 20-266 | 08/21/20 | 08/28/20 | 02/26/22 | | 618 Plainfield Road | Roof | | \$ 100.00 | R | \$ 6,300.00 |
| 20-276 | 08/25/20 | 08/28/20 | 02/26/22 | | 6419 Garfield Ave | Concrete Patio | | \$ 200.00 | R | \$ 3,800.00 |
| 20-273 | 08/24/20 | 08/28/20 | 02/26/22 | | 114 79th Street | Inter Demo | | \$ 460.00 | R | |
| 20-265 | 08/21/20 | 08/31/20 | 03/01/22 | | 150 Rodgers Ct | Concrete Patio/sloop | | \$ 275.00 | R | \$ 8,780.00 |
| 20-281 | 08/27/20 | 08/31/20 | 03/01/22 | | 555 Plainfield Rd # C | Re-occupancy | Pier Transportation | \$ 250.00 | C | |
| 20-283 | 08/31/20 | 08/31/20 | 03/01/22 | | 101 Lake Hinsdale Dr | Water Riser Piping | Lake Hinsdale Assoc | \$ 620.00 | C | \$ 28,290.00 |
| 20-284 | 08/31/20 | 08/31/20 | 03/01/22 | | 735 Plainfield Road | Temp. Sign | Clover Garden Center | \$ 325.00 | C | |
| 20-285 | 08/31/20 | 08/31/20 | 03/01/22 | | 735 Plainfield Road | Temp Tent | Clover Garden Center | \$ 310.00 | C | |
| 20-286 | 08/31/20 | 08/31/20 | 03/01/22 | | 346 Willowood Lane | Drainage | | \$ 240.00 | R | \$ 4,800.00 |
| 20-262 | 08/28/20 | 08/31/20 | 03/01/22 | | 6300 Kingery # 202 | Low Volt. Secur.sys | Palm Beach Tan | \$ 150.00 | C | \$ 545.00 |
| 20-249 | 08/11/20 | | 06/30/01 | | 545 Plainfield Road Unit E | Plan Review | | \$ 1,000.00 | C | |
| | | | 06/30/01 | | | | | | | |
| | | | 06/30/01 | | | | | | | |
| | | | 06/30/01 | | | | | | | |

09/04/2020 10:09 AM
 User: DSCHMIDT
 DB: Willowbrook

GL ACTIVITY REPORT FOR WILLOWBROOK
 FROM 01-00-310-401 TO 01-00-310-401
 TRANSACTIONS FROM 08/01/2020 TO 08/31/2020

Page: 1/1

| Date | JNL | Type | Description | Reference # | Debits | Credits | Balance |
|----------------------|-----|------|-----------------------------------|-------------------|--------------|-----------|--------------|
| Fund 01 GENERAL FUND | | | | | | | |
| 08/01/2020 | | | 01-00-310-401 BUILDING PERMITS | | BEG. BALANCE | | (91,306.81) |
| 08/03/2020 | CR | RCPT | Building Dept. Invoice 08/03/2020 | | | 260.00 | (91,566.81) |
| 08/03/2020 | CR | RCPT | Building Dept. Invoice 08/03/2020 | | | 215.00 | (91,781.81) |
| 08/04/2020 | CR | RCPT | Building Dept. Invoice 08/04/2020 | | | 265.00 | (92,046.81) |
| 08/04/2020 | CR | RCPT | Building Dept. Invoice 08/04/2020 | | | 35.00 | (92,081.81) |
| 08/05/2020 | AP | INV | MURPHY CONSTRUCTION SERVICES | REFUND FOR CANC P | 190.00 | | (91,891.81) |
| | | | PERMIT # 20-224 | | | | |
| 08/05/2020 | CR | RCPT | Building Dept. Invoice 08/05/2020 | | | 755.00 | (92,646.81) |
| 08/06/2020 | CR | RCPT | Building Dept. Invoice 08/06/2020 | | | 335.00 | (92,981.81) |
| 08/07/2020 | CR | RCPT | Building Dept. Invoice 08/07/2020 | | | 100.00 | (93,081.81) |
| 08/07/2020 | CR | RCPT | Building Dept. Invoice 08/07/2020 | | | 355.00 | (93,436.81) |
| 08/11/2020 | CR | RCPT | Building Dept. Invoice 08/11/2020 | | | 1,240.00 | (94,676.81) |
| 08/11/2020 | CR | RCPT | Building Dept. Invoice 08/11/2020 | | | 375.50 | (95,052.31) |
| 08/12/2020 | CR | RCPT | Building Dept. Invoice 08/12/2020 | | | 260.00 | (95,312.31) |
| 08/13/2020 | CR | RCPT | Building Dept. Invoice 08/13/2020 | | | 290.00 | (95,602.31) |
| 08/13/2020 | CR | RCPT | Building Dept. Invoice 08/13/2020 | | | 480.00 | (96,082.31) |
| 08/13/2020 | BD | TRX | SUMMARY BD 08/13/2020 | | | 100.00 | (96,182.31) |
| 08/14/2020 | CR | RCPT | Building Dept. Invoice 08/14/2020 | | | 480.00 | (96,662.31) |
| 08/14/2020 | BD | TRX | SUMMARY BD 08/14/2020 | | | 100.00 | (96,762.31) |
| 08/14/2020 | BD | TRX | SUMMARY BD 08/14/2020 | | | 4,690.35 | (101,452.66) |
| 08/17/2020 | CR | RCPT | Building Dept. Invoice 08/17/2020 | | | 2,903.50 | (104,356.16) |
| 08/18/2020 | CR | RCPT | Building Dept. Invoice 08/18/2020 | | | 785.00 | (105,141.16) |
| 08/19/2020 | CR | RCPT | Building Dept. Invoice 08/19/2020 | | | 280.00 | (105,421.16) |
| 08/19/2020 | BD | TRX | SUMMARY BD 08/19/2020 | | | 100.00 | (105,521.16) |
| 08/20/2020 | CR | RCPT | Building Dept. Invoice 08/20/2020 | | | 100.00 | (105,621.16) |
| 08/21/2020 | CR | RCPT | Building Dept. Invoice 08/21/2020 | | | 165.00 | (105,786.16) |
| 08/21/2020 | CR | RCPT | Building Dept. Invoice 08/21/2020 | | | 390.00 | (106,176.16) |
| 08/25/2020 | CR | RCPT | Building Dept. Invoice 08/25/2020 | | | 200.00 | (106,376.16) |
| 08/25/2020 | CR | RCPT | Building Dept. Invoice 08/25/2020 | | | 100.00 | (106,476.16) |
| 08/27/2020 | CR | RCPT | Building Dept. Invoice 08/27/2020 | | | 100.00 | (106,576.16) |
| 08/28/2020 | CR | RCPT | Building Dept. Invoice 08/28/2020 | | | 200.00 | (106,776.16) |
| 08/28/2020 | CR | RCPT | Building Dept. Invoice 08/28/2020 | | | 100.00 | (106,876.16) |
| 08/28/2020 | CR | RCPT | Building Dept. Invoice 08/28/2020 | | | 460.00 | (107,336.16) |
| 08/31/2020 | CR | RCPT | Building Dept. Invoice 08/31/2020 | | | 1,175.00 | (108,511.16) |
| 08/31/2020 | CR | RCPT | Building Dept. Invoice 08/31/2020 | | | 620.00 | (109,131.16) |
| 08/31/2020 | BD | TRX | SUMMARY BD 08/31/2020 | | | 150.00 | (109,281.16) |
| 08/31/2020 | | | 01-00-310-401 | END BALANCE | 190.00 | 18,164.35 | (109,281.16) |

09/04/2020 10:10 AM
User: DSCHMIDT
DB: Willowbrook

GL ACTIVITY REPORT FOR WILLOWBROOK
FROM 01-00-310-402 TO 01-00-310-402
TRANSACTIONS FROM 08/01/2020 TO 08/31/2020

Page: 1/1

| Date | JNL | Type | Description | Reference # | Debits | Credits | Balance |
|----------------------|-----|------|-----------------------------------|-------------|--------------|----------|------------|
| Fund 01 GENERAL FUND | | | | | | | |
| 08/01/2020 | | | 01-00-310-402 SIGN PERMITS | | BEG. BALANCE | | (3,644.13) |
| 08/06/2020 | CR | RCPT | Building Dept. Invoice 08/06/2020 | | | 775.00 | (4,419.13) |
| 08/18/2020 | CR | RCPT | Building Dept. Invoice 08/18/2020 | | | 294.28 | (4,713.41) |
| 08/31/2020 | CR | RCPT | Building Dept. Invoice 08/31/2020 | | | 325.00 | (5,038.41) |
| 08/31/2020 | | | 01-00-310-402 | END BALANCE | 0.00 | 1,394.28 | (5,038.41) |