



EST. 1960

Willowbrook

7760 Quincy Street
Willowbrook, IL 60527-5594

Phone: (630) 323-8215 Fax: (630) 323-0787 www.willowbrookil.org

Mayor

Frank A. Trilla

Village Clerk

Leroy R. Hansen

Village Trustees

Dennis Baker

Sue Berglund

Umberto Davi

Terrence Kelly

Michael Mistele

Paul Oggerino

Village Administrator

Tim Halik

Chief of Police

Mark Shelton



Proud Member of the
Illinois Route 66 Scenic Byway

AGENDA

SPECIAL MEETING OF THE PARKS AND RECREATION COMMISSION OF THE VILLAGE OF WILLOWBROOK TO BE HELD TUESDAY, AUGUST 13, 2013, AT **7:00PM** AT THE WILLOWBROOK VILLAGE HALL, 7760 QUINCY STREET, DU PAGE COUNTY, ILLINOIS

1. CALL TO ORDER
2. ROLL CALL
3. APPROVAL OF MINUTES
 - A. JULY 2, 2013
4. REPORTS
 - A. Park News In Brief
5. OLD BUSINESS
 - A. Waterford Park Updates
 - B. Master Plan
 - C. Leashed dogs in parks
 - D. Lake Hinsdale Park task force
6. NEW BUSINESS
 - A. Holiday Party
 - B. Eagle Scout Project
7. CORRESPONDENCE/COMMUNICATIONS
8. VISITOR'S BUSINESS – (Public comment is limited to three minutes per person and only those items that are on the agenda.)
9. ADJOURNMENT

MINUTES OF THE REGULAR MEETING OF THE PARKS AND RECREATION COMMISSION
HELD ON TUESDAY, JULY 2, 2013, AT THE WILLOWBROOK VILLAGE HALL, 7760 QUINCY
STREET, WILLOWBROOK, DUPAGE COUNTY, ILLINOIS

1. CALL TO ORDER

Chairman Cobb called the meeting to order at the hour of 7:02 p.m.

2. ROLL CALL

Those present at roll call were Chairman Richard Cobb, Commissioners Jo Bice, Ronald Kanaverskis, Leonard Kaucky, Laurie Landsman, Carol Lazarski, Doug Stetina, and Ramona Weigus.

ABSENT: Commissioner Rene Schuurman.

Also present was Superintendent of Parks and Recreation Kristin Violante.

A QUORUM WAS DECLARED

3. APPROVAL OF MINUTES – JUNE 18, 2013

The Commission reviewed the June 18, 2013 minutes.

MOTION: A Motion was made by Commissioner Stetina and seconded by Commissioner Lazarski to approve the June 18, 2013 minutes as presented.

ROLL CALL VOTE: AYES: Chairman Cobb, Commissioners Bice, Kanaverskis, Kaucky, Landsman, Lazarski, Stetina, and Weigus. NAYS: None. ABSENT: Commissioner Schuurman.

MOTION DECLARED CARRIED

4. REPORTS

A. *Park News in Brief*

Superintendent Violante reviewed upcoming summer special events and asked for volunteers for some of the events.

OSLAD Grants

OSLAD grant applications are scheduled to be sent out Thursday, June 27. We hope to hear if we have been granted an interview in the fall.

5. OLD BUSINESS

A. Master Plan

Superintendent Violante gave each Commissioner a three ring binder of the recently approved master plan. She will collect the binders and return them to the Commissioners at each meeting. The Commission discussed the project at Waterford Park. The Committee reminded Superintendent Violante that she should organize a committee made up of local Waterford residents to go over the plan and indicate their opinions on specific park amenities. At the regularly scheduled August Parks & Recreation meeting, the Commissioners will review information obtained from this committee meeting, as well as look over the bid specs and timeline with Tod Stanton.

6. NEW BUSINESS

A. Leashed Dogs in Parks

Superintendent Violante stated the issue of leashed dogs came up during Master Plan meetings and at the joint meeting with the Village Board. The Village Board is looking for the Parks and Recreation Commission to give input and a recommendation on whether or not the current ordinance should be changed to allow leashed dogs in the parks. Commissioner Stetina stated he spoke with Director of the Burr Ridge Park District, Jim Pacanowski, since they allow leashed dogs in their parks. Commissioner Stetina asked him if they have had any issues with dogs in the parks. The Director indicated there are some people who do not follow the rules, but they are given warnings and told the police will be called for continual violations. They have never had an issue where the police needed to be called. Commissioner Stetina asked the Director if they ever thought of having a dog park. The Director indicated it has been brought up but there has not been enough interest in pursuing it.

Commissioner Stetina also contacted the Assistant Director of the Darien Park District. Their ordinance allows for leashed dogs in the park and owners are responsible for cleaning up after their pets. Commissioner Stetina stated their ordinance states that certain breeds of dogs, such as pit bulls, are not allowed in the park.

Commissioner Stetina asked Jim Pacanowski from the Burr Ridge Park District if they considered allowing dogs in the parks during specific times, such as prior to 7:00 a.m. and after 7:00 p.m. He stated they have not, but felt this could be a compromise to be considered.

Commissioner Kanaverskis stated he is completely opposed to having leashed dogs in the parks. He himself has dogs, but questions how this would be enforced, as other residents and children are afraid of dogs. Commissioner Kanaverskis feels it is a liability waiting to happen. He stated he is in favor of a dog park, but not for having the dogs in all the parks.

Commissioner Lazarski stated she has seen fear in a mother's face when the idea of dogs in Village parks was brought up in focus group meetings. Commissioner Landsman stated she is in

favor of leashed dogs in the park and feels most owners are responsible and will pick up after their pets. Commissioner Kaucky stated he lives near Community Park and sees most people walk their dogs around the park and not through it.

Commissioner Weigus mentioned if leashed dogs are allowed in the parks, they should be kept away from playground areas.

Chairman Cobb stated that the Commissioners have a split vote on this issue. Commissioner Landsman asked what the results of the citizen survey were. Superintendent Violante stated those results were also split.

Commissioner Landsman stated she is not in favor of a dog park. Commissioner Stetina stated he has been to a dog park in Naperville and has been afraid of some of the dogs that are let loose.

Commissioner Kaucky asked if dogs would need to be allowed in all of the parks. Commissioner Landsman stated that is an option to think about. Chairman Cobb stated this option would be a good compromise. The consensus of the Commissioners was to not allow dogs in Borse Community Park.

After discussion, Chairman Cobb stated the consensus of commissioners was to make sure dogs are licensed and to pick a couple of the parks with the least amount of children. Superintendent Violante suggested Creekside Park, Prairie Trail Park, and Ridgemoor Park. Suggestion was made to discuss the potential for leashed dogs in specific parks to garner resident feedback.

Chairman Cobb stated the commission will come up with a plan that will allow leashed dogs in three parks all day long. All dogs must be tagged. Chairman Cobb requested that Superintendent Violante bring a proposed plan to the next Commission meeting in August. The Commissioners requested that a public invite be sent to residents living around the three designated parks to give their feedback at the September Parks & Recreation meeting.

B. Village-Wide Holiday Event Committee

Superintendent Violante stated Mayor Trilla would like the Village to host a larger holiday event than what has been offered in the past. A meeting for potential committee members has been scheduled for July 10th at 10:00 a.m. Superintendent Violante asked if any commissioners would like to be part of a holiday event committee. Commissioner Lazarski indicated she would like to serve on that committee.

C. Implementation of Task Force to make Recommendations for Lake Hinsdale Park

Chairman Cobb requested Commissioner Bice review ideas from the Master Plan for Lake Hinsdale Park. Commissioner Bice stated that outside fitness trends are different from general equipment currently seen in parks. Equipment trends are leaning towards what can be done with your own body weight. She passed out some examples of potential equipment. Chairman Cobb

stated that he would like to see a running track and fitness classes in the park. Chairman Cobb, Commissioner Landsman, and Commissioner Bice stated they would be part of the task force looking into turning Lake Hinsdale Park into a fitness park. Chairman Cobb suggested a task force meeting be scheduled the third or fourth week of July.

D. Waterford Park Updates

Superintendent Violante stated that prior to the August Parks and Recreation meeting, she will have had a committee meeting with Tod Stanton present so he can provide samples of rubberized surfaces and shade structures. She will have Tod Stanton review plans for Waterford at the August Parks and Recreation meeting in hopes of having bid information out by September.

E. Large Picnic Permits/Parking

Superintendent Violante stated every year, World Financial has a company picnic of over 200 people at Borse Park. Currently, any park permit over 200 attendees requires Village Board approval. People attending these larger permit events park their vehicles on both sides of Midway Drive which creates an unsafe situation. Superintendent Violante has spoken with the police department, and they are looking into permanently eliminating parking along the north side of Midway Drive from Eleanor to Clarendon Hills Road so emergency vehicles can have access through Midway Drive. The problem with this idea is there needs to be an alternate place to park. Superintendent Violante stated that she will speak with the Superintendent of the Gower School District to determine if Gower West can be used as an alternate parking location.

7. CORRESPONDENCE/COMMUNICATIONS

Commissioner Stetina stated he is working with an Eagle Scout on a Veterans memorial project at Willow Pond. Commissioner Stetina will be donating money for a memorial bench. Part of the Eagle Scout project is to install a flower garden incorporating the memorial bench. Superintendent Violante stated the Veterans Memorial will not be in an area of the park being considered for redevelopment.

Commissioner Weigus stated Superintendent Violante requested she bring information about Gaga pits. The cost is approximately \$500 for all of the materials and the activity is similar to dodge ball.

Commissioner Stetina stated when he spoke with the Director of the Burr Ridge Park District, he wanted to extend his appreciation to Superintendent Violante for her help with the senior program.

8. VISITORS' BUSINESS

There was no visitors' business.

9. ADJOURNMENT

MOTION: Made by Commissioner Landsman, seconded by Commissioner Weigus to adjourn the meeting at the hour of 8:34 p.m.

ROLL CALL VOTE: AYES: Chairman Cobb, Commissioners Bice, Kanaverskis, Kaucky, Landsman, Lazarski, Stetina, and Weigus. NAYS: None. ABSENT: Commissioner Schuurman.

UNANIMOUS VOICE VOTE

MOTION DECLARED CARRIED

PRESENTED, READ and APPROVED,

August 13, 2013

Chairman

Minutes transcribed by Executive Secretary Cindy Stuchl.

Park News for Monthly Report, July 2013

Summer Special Events

The sixth annual Touch a Truck event was held Friday, July 12. Approximately 300 adults and children attended the event. In addition, nine vehicles participated in the event. Community Bank of Willowbrook was also on hand passing out information about their Junior Savers Accounts. Community Bank of Willowbrook has been a great supporter of the Parks & Recreation Department. Thank you to Doug and Fran Stetina and Carol Lazarski for helping out at this event. It was a huge success.

The Village yard sale was held on Saturday, July 13 at Willow Pond Park. Nine registrants from the Village of Willowbrook and eight from the Burr Ridge Park District participated in this event. Overall it was a huge success. Many of the vendors asked if an additional sale will be held in the fall, therefore, one was scheduled for late September.

The Goonies was the first movie in the park on Thursday, July 18. There were pre-planned activities including a pirate scavenger hunt. Overall the attendance was low, about 35, probably due to the hot weather, bugs and lack of interest in the movie. Harry Potter and the Sorcerer's Stone will be shown on Thursday, August 15. Village Administrator Tim Halik has scheduled a spraying for bus a day prior to the movie. Thank you to those Commissioners who helped out at this event. We hope to have better attendance at the next movie.

835 Midway Drive

In late August the Village of Willowbrook will close on the old Rath's and Rath's Building located at 835 Midway Drive. The preliminary plan is to move the administration offices to this building and use the current Village Hall for the police department.

OSLAD Grants

A representative from the Illinois Department of Natural Resources, the agency that administers the OSLAD grant program, toured Willow Pond Park on Tuesday, August 6. Mayor Trilla, Superintendent of Parks & Recreation Violante and Tod Stanton from Design Perspectives met with Sue Eubanks from IDNR.



Dugouts!



Champaign Parks District
Champaign, Illinois
Canary Yellow Fabric / Jet Black Frame
8' x 30' x 7' eave height



North Shore Youth Center
City of Miami Beach Parks
Miami Beach, Florida
Forest Green Fabric / Evergreen Frame
20' x 30' x 12' eave height



Bleachers!



Picnic Areas!

Latte Tan Poles
w/ green cover
→

Elk Grove Village
Elk Grove, Illinois
Aquatic Blue Fabric / Latte Tan Frame
18' x 18' x 8' eave height

*Shown with optional
Pier Mount Posts.*

Colors

CoolNet™ Shade Fabric

COLOR	SHADE FACTOR %	UVR BLOCK %
Silver Grey	92	97
Light Blue	95	97
Bright Red	81	91
Canary Yellow	77	93
Eggshell White	79	95
Rivergum Green	86	93
Desert Sand	84	95
Aquatic Blue	88	94
Forest Green	96	97
Navy Blue	96	99

Powder-Coat Colors

All steel tubing components are manufactured with a bright and durable polyester powder-coated finish. Standard powder-coat colors are shown below, with many optional custom colors available upon request.

Canary Yellow

Eggshell White

Rivergum Green

Desert Sand

Aquatic Blue

Forest Green

Navy Blue

Alpine White

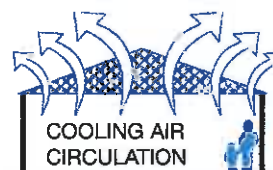
Jet Black

Latte Tan

Coffee Brown

Blue Streak

Evergreen

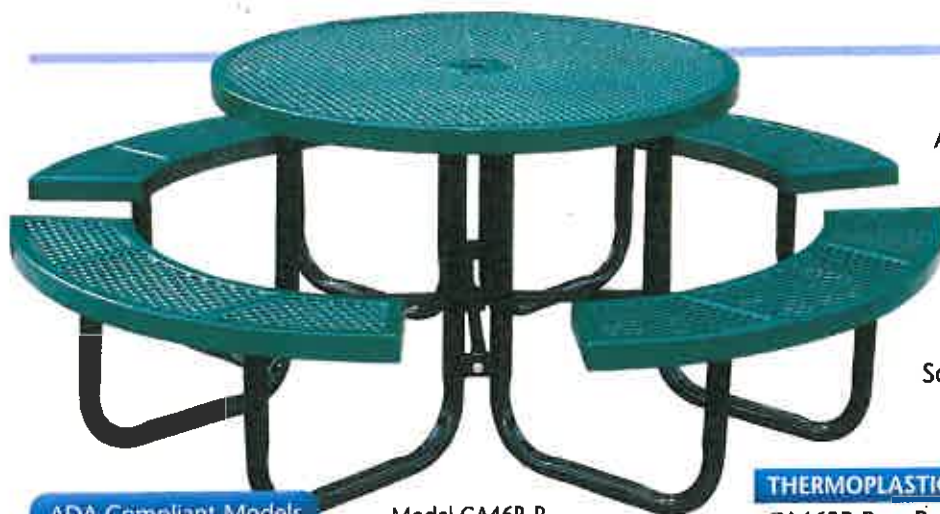


Thermoplastic Coated



Thermoplastic, with its durable, ultraviolet stabilized coating, makes these cafe style tables perfect for any indoor/outdoor food service setting.

Round Table



ADA Compliant Models
are available at
www.belson.com

Model CA46R-P

Available in both portable and in-ground models, this 46" round table with its concave seats will provide extra seating capacity in any setting. Seats and tops are made with $\frac{3}{4}$ " #9 expanded and flattened metal. Standard 2" umbrella hole. Available in the colors shown below. Some assembly required.

THERMOPLASTIC COATED 46" ROUND TABLE - 4 SEATS

CA46R-P	Portable Model	(239 lbs.)	\$733.00
CA46R-I	In-ground Mount Model	(298 lbs.)	\$905.00
CA46R-S	Surface Mount Model	(298 lbs.)	\$921.00

(Prices F.O.B. Factory)

THERMOPLASTIC COATED 46" ROUND TABLE - 3 SEATS

CA463R-P	Portable Model	(229 lbs.)	\$699.00
CA463R-I	In-ground Mount Model	(288 lbs.)	\$850.00
CA463R-S	Surface Mount Model	(288 lbs.)	\$865.00

THERMOPLASTIC COATED 46" ROUND TABLE - 2 SEATS

CA462R-P	Portable Model	(219 lbs.)	\$627.00
CA462R-I	In-ground Mount Model	(268 lbs.)	\$824.00
CA462R-S	Surface Mount Model	(268 lbs.)	\$840.00

(Prices F.O.B. Factory)

Square Table

These tables offer the versatility of permanent placement to deter theft or portable placement to accommodate constantly changing needs. All tables are 46" square and come standard with a 2" umbrella hole. Tops and seats are made from $\frac{3}{4}$ " #9 expanded and flattened steel welded inside 2" x 2" angle iron. Corners are rounded for added safety. Available in colors shown below. The welded steel frame is powder-coated in your choice of colors. Some assembly required.



Model R46-P



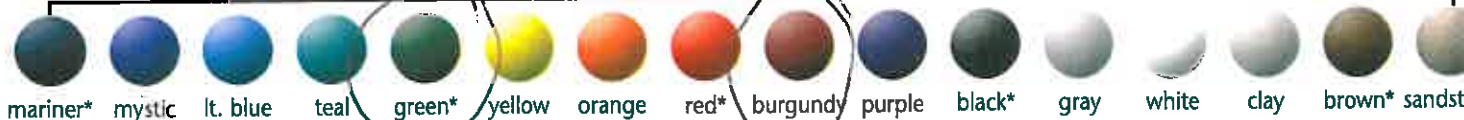
Model R46-I

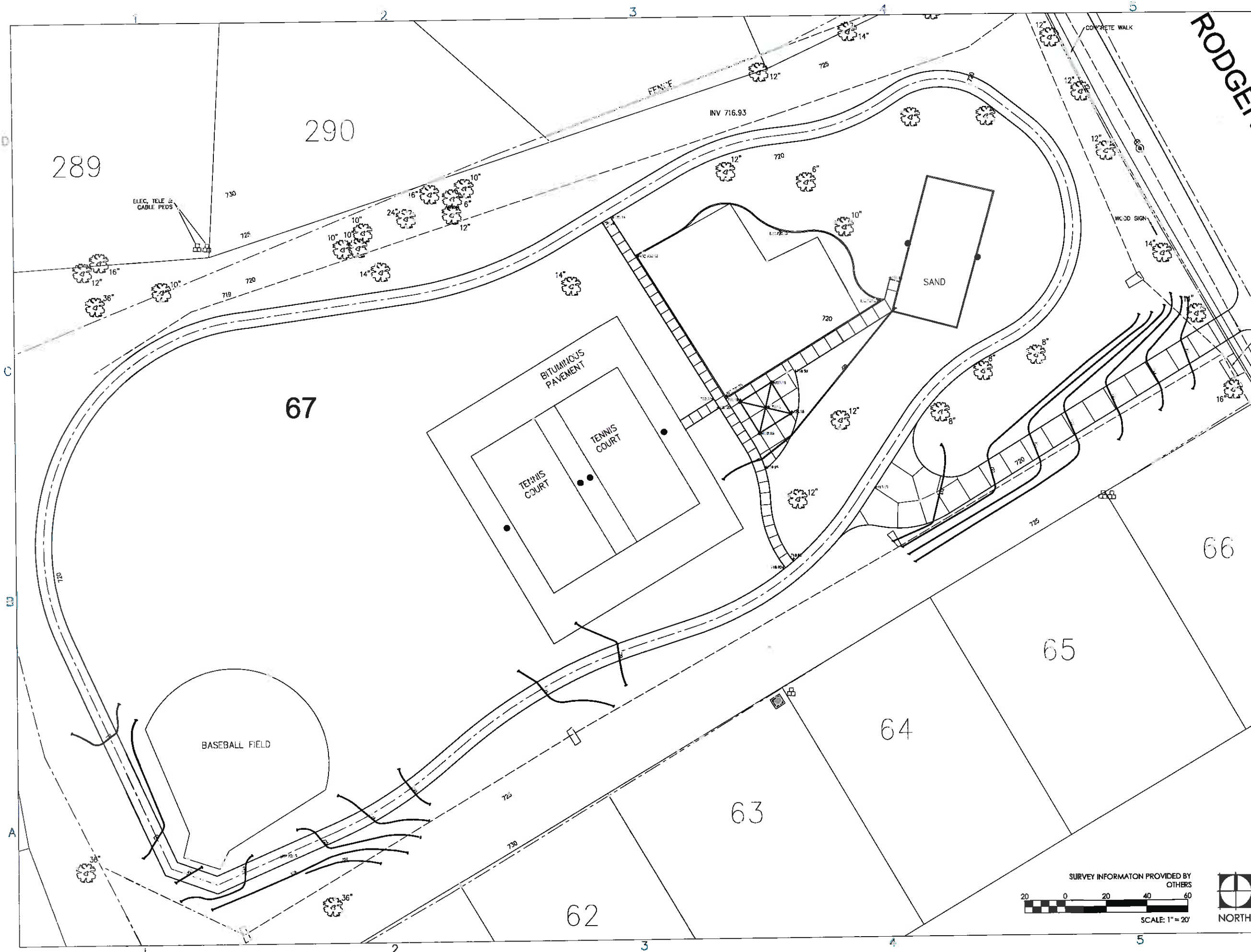
THERMOPLASTIC COATED SQUARE TABLE WITH 4 SEATS

R46-P	Portable	(253 lbs.)	\$691.00
R46-I	In-ground	(361 lbs.)	\$844.00
R46-S	Surface Mount	(361 lbs.)	\$863.00

(Prices F.O.B. Factory)

Color Options





PARKS & RECREATION DEPARTMENT
 THE VILLAGE OF
WILLOWBROOK
 2013 WATERFORD
 PARK IMPROVEMENTS

Design Perspectives Inc.
 Grounded in Creativity

1280 Iroquois Avenue
 Suite 110
 Naperville, Illinois 60563
 Telephone: (630) 428-3134
 Fax: (630) 428-3159
 www.design-perspectives.net

In Association With

REV.	COMMENT	DATE

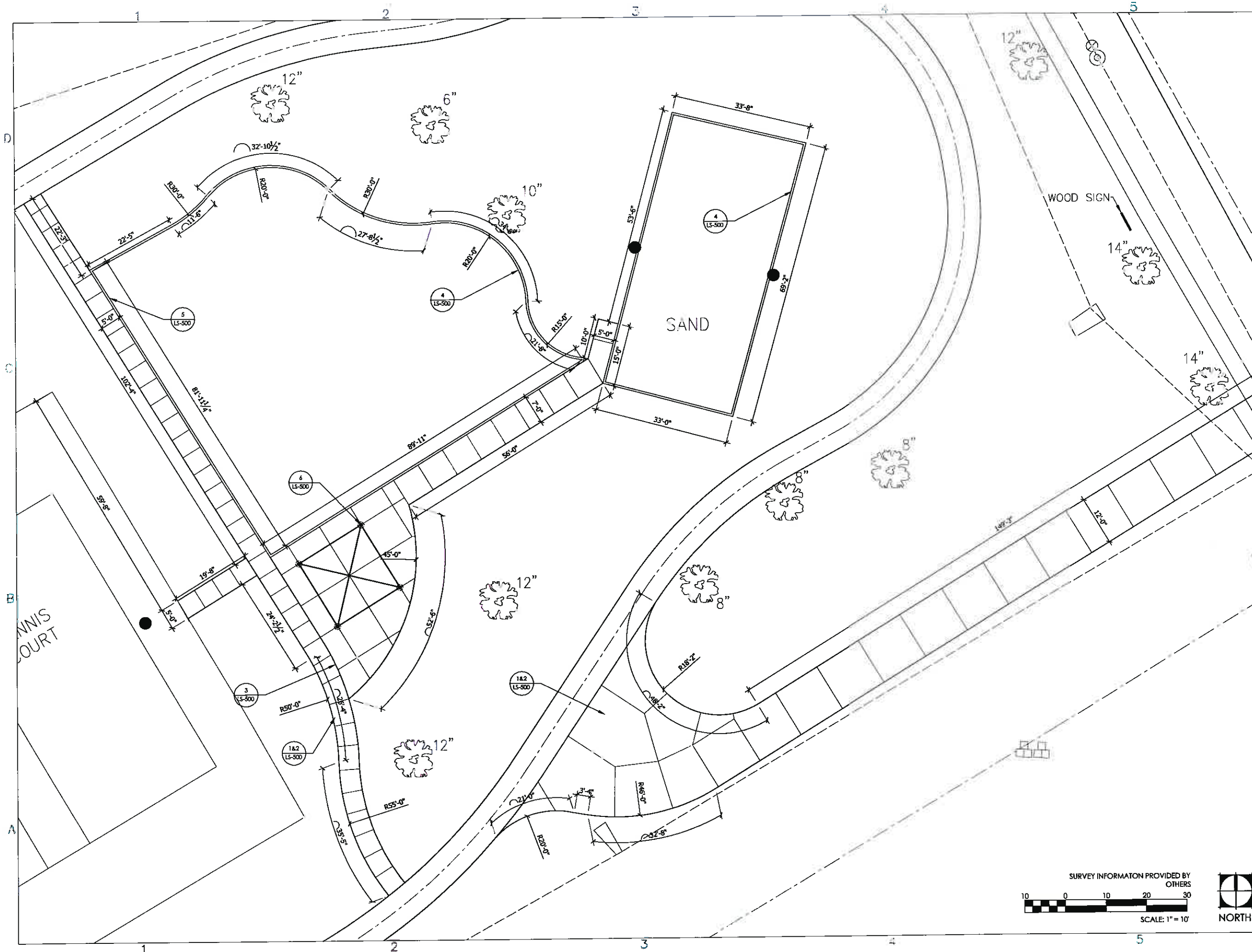
SEAL:

DATE: 8/6/2013
 JOB NO.: 13-5812
 DRAWN BY: MJA
 CHECKED BY: TS

DRAWING TITLE:
GRADING PLAN

SHEET NO.:
LG-100

© DESIGN PERSPECTIVES INC. ALL RIGHTS RESERVED



PARKS & RECREATION DEPARTMENT
 THE VILLAGE OF
WILLOWBROOK
 2013 WATERFORD
 PARK IMPROVEMENTS

Design Perspectives, Inc.
 Grounded in Creativity
 1280 Iroquois Avenue
 Suite 110
 Naperville, Illinois 60563
 Telephone: (630) 428-3134
 Fax: (630) 428-3159
 www.design-perspectives.net

In Association With

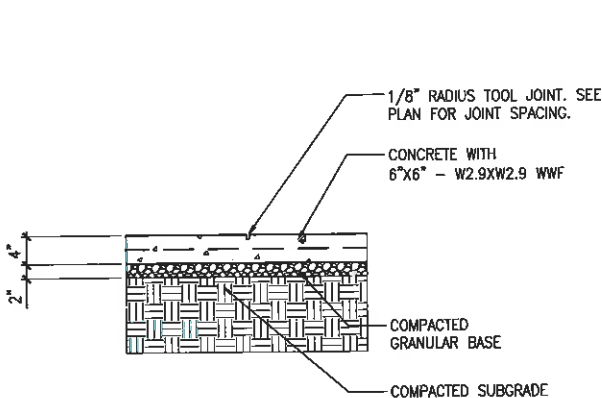
REV.	COMMENT	DATE

SEAL:

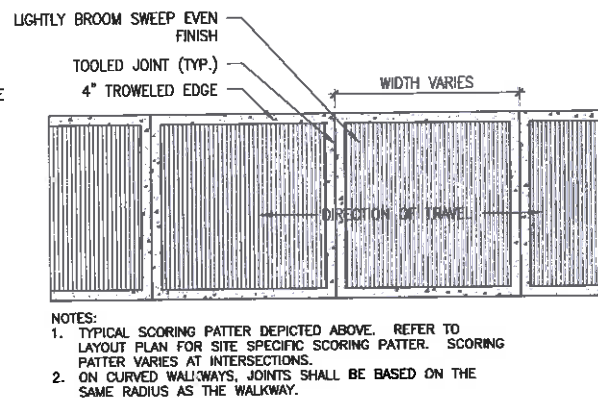
DATE: 8/6/2013
 JOB NO.: 13-5812
 DRAWN BY: MJA
 CHECKED BY: TS

DRAWING TITLE:
LAYOUT PLAN

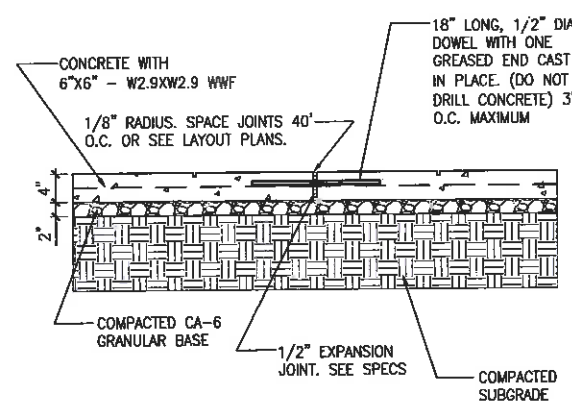
SHEET NO.:
LS-101



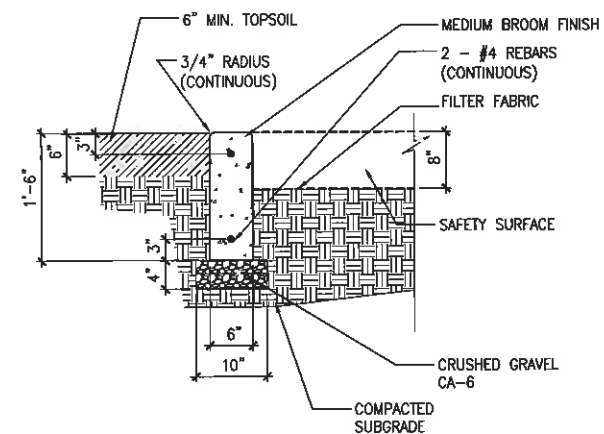
1 4" CONCRETE PAVING
SCALE: NTS



2 CONCRETE FINISH
SCALE: NTS

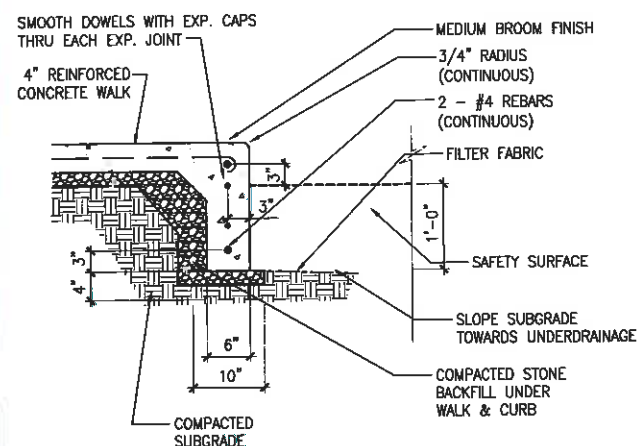


3 EXPANSION JOINT
SCALE: NTS

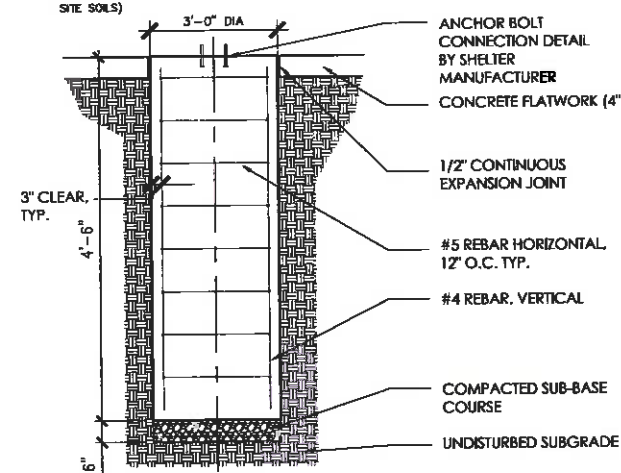


4 CONCRETE CURB
SCALE: NTS

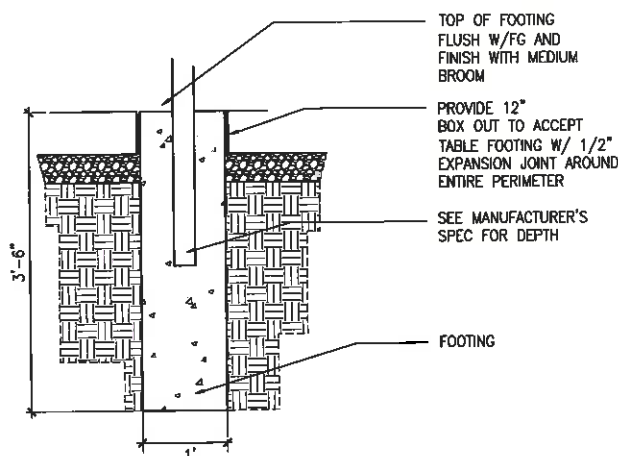
MATERIAL SPECIFICATIONS
CONCRETE $f_c = 3000$ PSI
REBAR - ASTM A615
GRADE 60, DEFORMED
SOIL BEARING
CAPACITY = 3500 PSF
MINIMUM ANGLE OF INTERNAL
FRICTION = 20 DEGREES
(NOTIFY PROJECT
MANAGER PRIOR TO
DRILLING FOOTINGS IF
THIS VALUE IS NOT
CONSISTENT WITH THE
SITE SOILS)



5 CURB FACED CONCRETE WALK
SCALE: NTS



6 SHELTER FOOTING
SCALE: NTS



7 BENCH FOOTING
SCALE: NTS

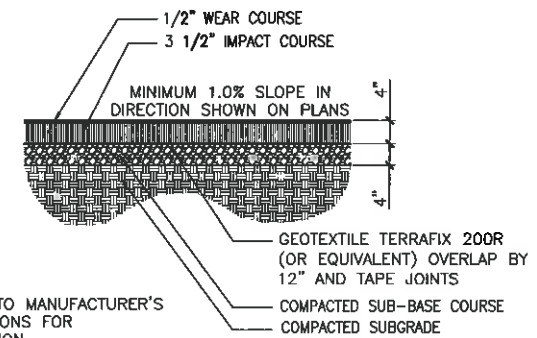
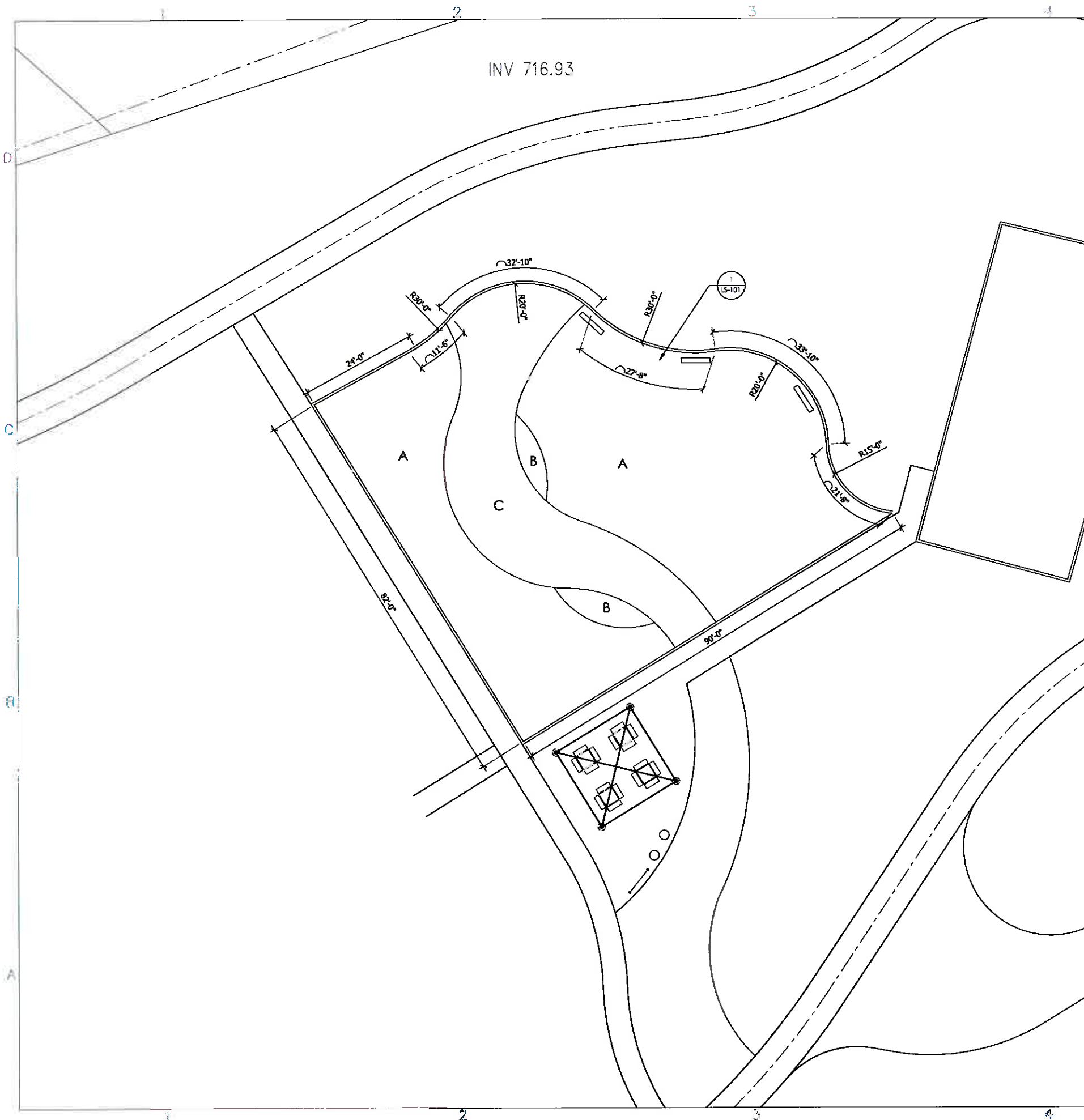
REV.	COMMENT	DATE

SEAL:

DATE: 8/6/2013
JOB NO.: 13-5812
DRAWN BY: MJA
CHECKED BY: TS

DRAWING TITLE:
**CONSTRUCTION
DETAILS**

SHEET NO.:
LS-500

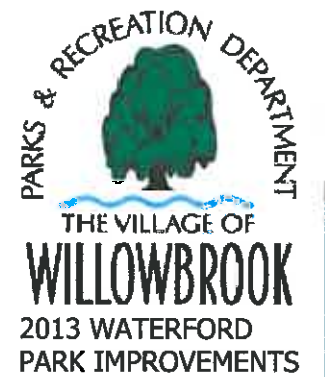
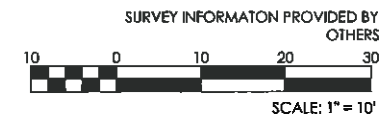


NOTES:
1. REFER TO MANUFACTURER'S INSTRUCTIONS FOR INSTALLATION.

1 POURED IN PLACE PLAY SURFACE SCALE: N.T.S.

SOFSURFACES POURED IN PLACE COLOR:

- ▲ GREEN
- ▲ TAN
- ▲ BLUE



Design Perspectives Inc.
Grounded in Creativity
1280 Iroquois Avenue
Suite 110
Naperville, Illinois 60563
Telephone: (630) 428-3134
Fax: (630) 428-3159
www.design-perspectives.net

In Association With

REV.	COMMENT	DATE

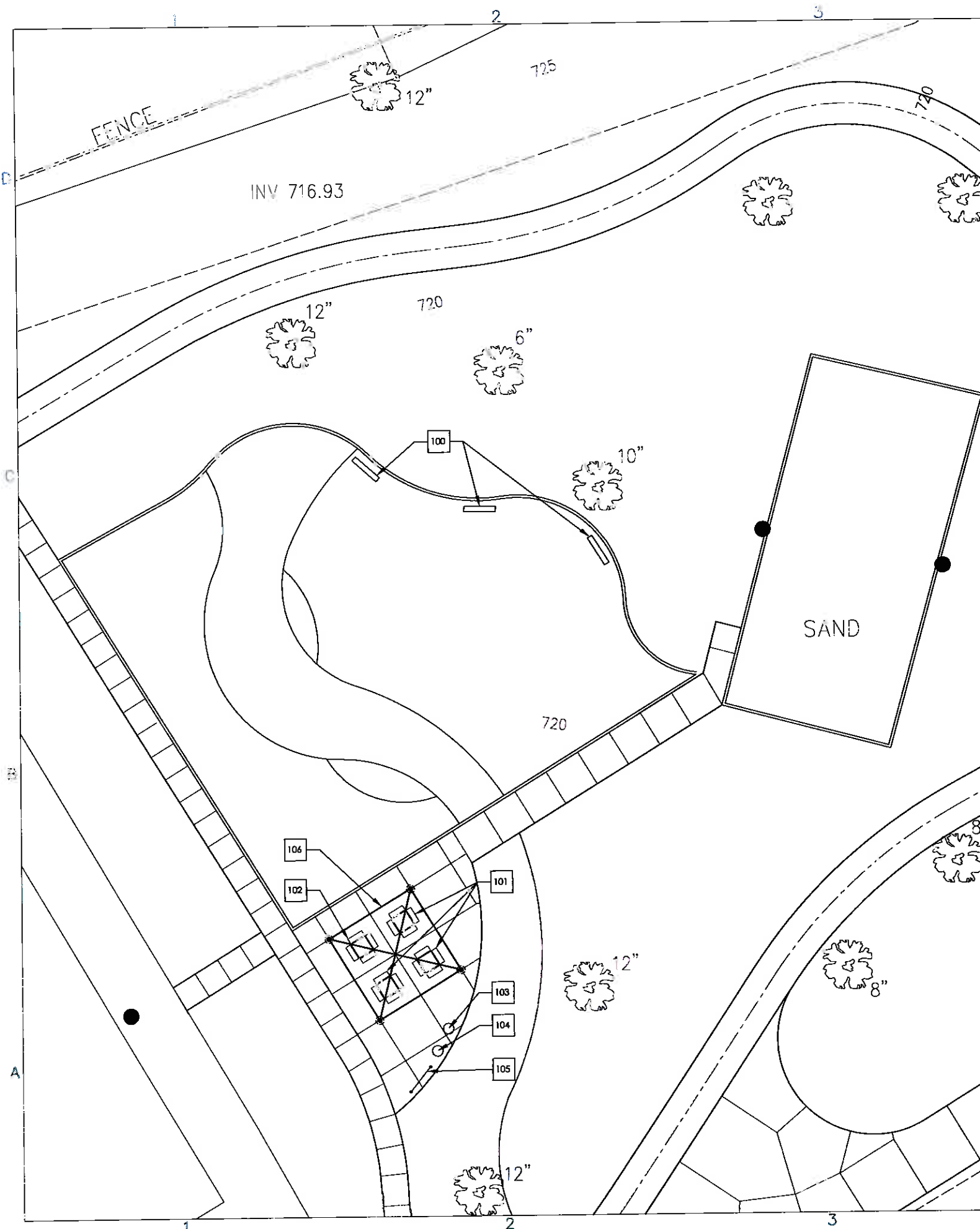
SEAL:

DATE: 8/6/2013
JOB NO.: 13-5812
DRAWN BY: MJA
CHECKED BY: TS

DRAWING TITLE:
LAYOUT PLAN

SHEET NO.:
LS-101

© DESIGN PERSPECTIVES INC. ALL RIGHTS RESERVED



100 SITE FURNISHING SCHEDULE

SYMBOL	DESCRIPTION
100	BENCH INSTALL EXISTING BENCHES
101	PICNIC TABLE 6' TABLE W/ 2 3/8" LEGS BY WABASH VALLEY MODEL # SG106D SURFACE MOUNT WITH SG135N SURFACE MOUNT PACKAGE COLOR: FRAME-BLACK & PLASTISOL-GREEN
102	ADA PICNIC TABLE 8' TABLE W/ 2 3/8" LEGS BY WABASH VALLEY MODEL # SG115D SURFACE MOUNT WITH SG 135N SURFACE MOUNT PACKAGE COLOR: FRAME-BLACK & PLASTISOL-GREEN
103	LITTER CAN PREMIER SERIES BY PARIS MODEL PFT32 SURFACE MOUNT, COLOR: FOREST GREEN
104	RECYCLING CAN PREMIER SERIES BY PARIS MODEL PFTRS45D SURFACE MOUNT, COLOR: FOREST GREEN
105	BIKE RACK 4 HUMP IN-GROUND MOUNT BY PARIS MODEL BRM4 COLOR: FOREST GREEN
106	SHADE STRUCTURE SHADE SYSTEMS INC. FABRIC SHADE STRUCTURE COLOR: FRAME LATTE TAN & FABRIC FOREST GREEN

In Association With

REV.	COMMENT	DATE

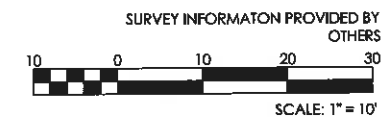
SEAL:

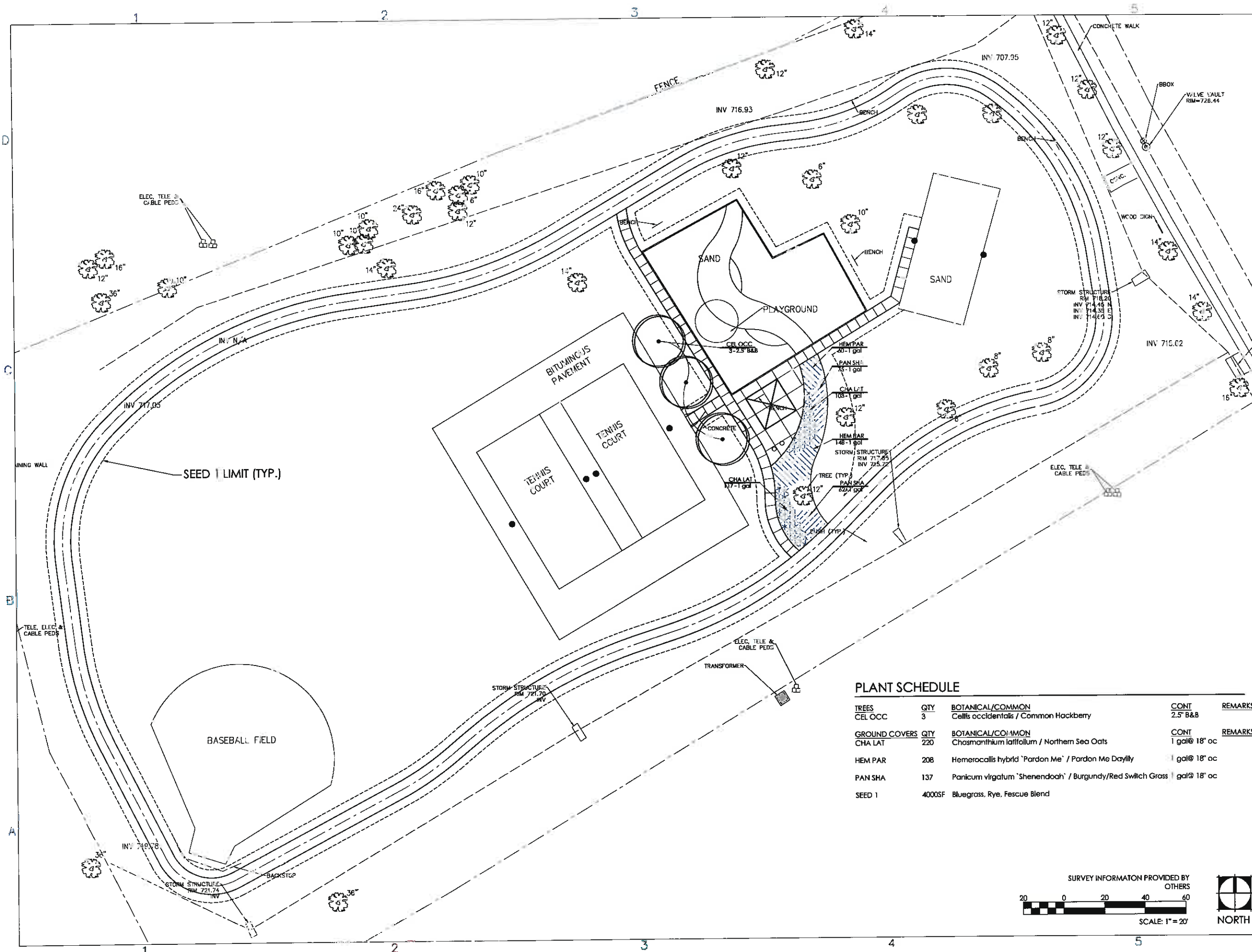
DATE: 8/6/2013
JOB NO.: 13-5812
DRAWN BY: MJA
CHECKED BY: TS

DRAWING TITLE:
SITE PLAN

SHEET NO.:
LS-100

© DESIGN PERSPECTIVES INC. ALL RIGHTS RESERVED





THE VILLAGE OF
WILLOWBROOK
2013 WATERFORD
PARK IMPROVEMENTS



1280 Trojans Avenue
Suite 110
Naperville, Illinois 60563
Telephone: (630) 428-3134
Fax: (630) 428-3159
www.design-perspectives.net

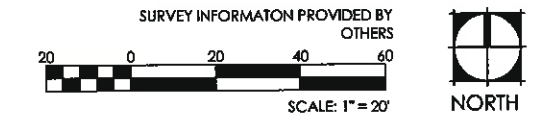
In Association With

REV.	COMMENT	DATE

SEAL:

PLANT SCHEDULE

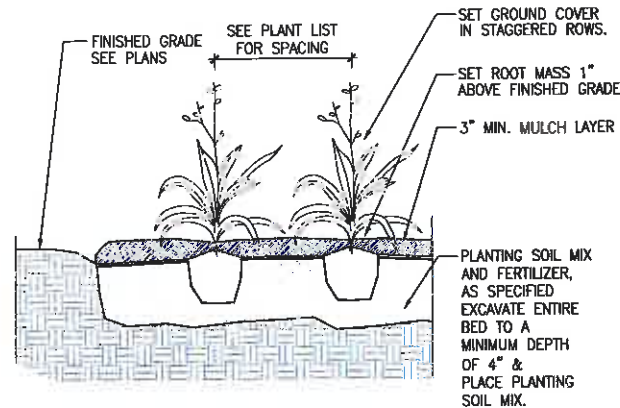
TREES	QTY	BOTANICAL/COMMON	CONT	REMARKS
CEL OCC	3	Cellis occidentalis / Common Hackberry	2.5" B&B	
GROUND COVERS	QTY	BOTANICAL/COMMON	CONT	REMARKS
CHA LAT	220	Chasmanthium latifolium / Northern Sea Oats	1 gal@ 18" oc	
HEM PAR	208	Hemerocallis hybrid 'Pardon Me' / Pardon Me Daylily	1 gal@ 18" oc	
PAN SHA	137	Panicum virgatum 'Shenandoah' / Burgundy/Red Switch Grass	1 gal@ 18" oc	
SEED 1	4000SF	Bluegrass, Rye, Fescue Blend		



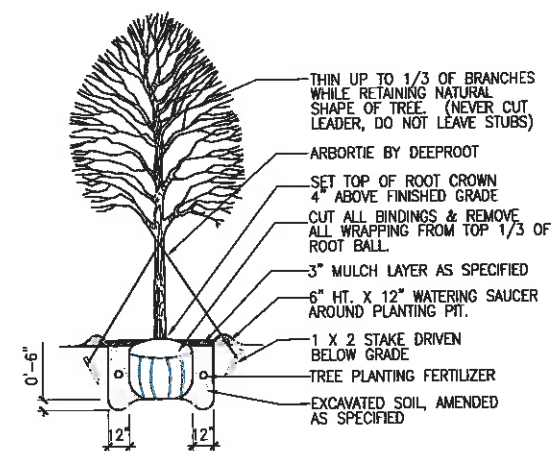
DATE: 7/30/2013
JOB NO.: XXXXXX
DRAWN BY: MJA
CHECKED BY: TS

DRAWING TITLE:
PLANTING PLAN

SHEET NO.:
LP-100

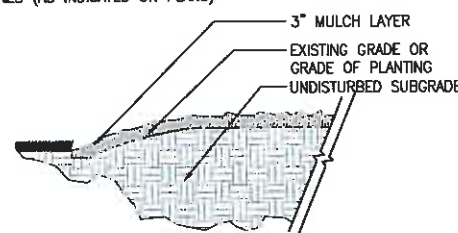


GROUNDCOVER PLANTING
SCALE: 1"=1'-0"
DT-groundcover-gm

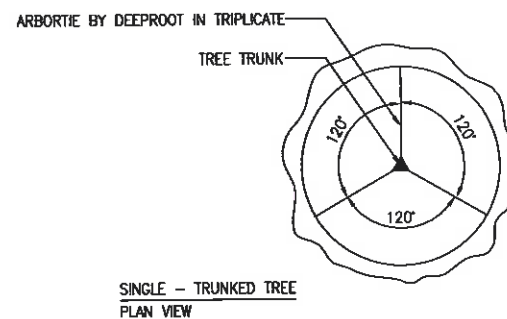


SHADE TREE PLANTING
SCALE: 1/4"=1'-0"
DT-tree-w-wire-gm

NOTES:
1. TRENCH EDGE DETAIL SHALL BE USED AT ALL LAWN EDGES AND AT EDGES OF MULCHED AREAS (FOR CONTAINMENT)
2. TRENCH EDGE SHALL CREATE A CLEAN SEPARATION BETWEEN AREAS, AND SHALL CREATE SMOOTH AND EVEN LINES (AS INDICATED ON PLANS)



TRENCH EDGE DETAIL
SCALE: 1"=1'-0"
DT-trench-gm



TREE GUYING DETAIL - SHADE TREE
SCALE: 1/4"=1'-0"
DT-tree-w-wire-gm-plan

1. THE LANDSCAPE CONTRACTOR SHALL BE RESPONSIBLE FOR MAKING HIMSELF FAMILIAR WITH ALL UNDERGROUND UTILITIES AND STRUCTURES. SEE CONSTRUCTION NOTES.
2. DO NOT WILLFULLY PROCEED WITH PLANTINGS AS DESIGNED WHEN IT IS OBVIOUS THAT OBSTRUCTIONS AND/OR GRADE DIFFERENCES EXIST THAT MAY NOT HAVE BEEN KNOWN DURING THE DESIGN PROCESS. SUCH CONDITIONS SHALL BE IMMEDIATELY BROUGHT TO THE ATTENTION OF THE PROJECT MANAGER. THE LANDSCAPE CONTRACTOR WILL BE HELD RESPONSIBLE FOR ANY NECESSARY REVISIONS AND COSTS DUE TO FAILURE TO GIVE SUCH NOTIFICATION.
3. THE LANDSCAPE CONTRACTOR SHALL BE RESPONSIBLE FOR ANY COORDINATION WITH SUBCONTRACTORS AND/OR SUPPLIERS AS REQUIRED TO ACCOMPLISH PLANTING OPERATIONS.
4. THE LANDSCAPE CONTRACTOR IS TO RECEIVE THE SITE AT +/- 1/10TH OF AN INCH. THE LANDSCAPE CONTRACTOR SHALL OBTAIN A LETTER OF GRADE FROM THE GENERAL CONTRACTOR PRIOR TO BEGINNING WORK.
5. REFER TO SPECIFICATIONS FOR PLANTING REQUIREMENTS, MATERIALS, AND EXECUTION.
6. ALL TREES SHALL BE TAGGED BY THE PROJECT MANAGER AT A NURSERY SELECTED BY THE LANDSCAPE CONTRACTOR OR AT THE DISCRETION OF THE PROJECT MANAGER.
7. FINAL LOCATION OF ALL PLANT MATERIAL SHALL BE SUBJECT TO APPROVAL OF THE PROJECT MANAGER PRIOR TO DIGGING ANY HOLES. THE LANDSCAPE CONTRACTOR IS RESPONSIBLE FOR PROVIDING PROJECT MANAGER ADEQUATE ADVANCE NOTICE FOR ON-SITE APPROVALS. THE LANDSCAPE CONTRACTOR IS TO THE FOLLOWING BEFORE BEGINNING INSTALLING PLANTINGS:

SHRUBS - LAY OUT THE ACTUAL CONTAINERS ON-SITE BEFORE DIGGING HOLES.

TREES - STAKE THE LOCATIONS BEFORE DIGGING HOLES. ANY TREE PLANTED WITHOUT ITS FINAL LOCATION APPROVED BY THE PROJECT MANAGER MAY BE REQUESTED TO BE RELOCATED AT THE SOLE EXPENSE OF THE LANDSCAPE CONTRACTOR.

8. THE LANDSCAPE CONTRACTOR SHALL NOTIFY THE PROJECT MANAGER AT LEAST 48 HOURS IN ADVANCE PRIOR TO COMMENCEMENT OF WORK TO COORDINATE PROJECT OBSERVATION SCHEDULES.

9. IF CONFLICTS ARISE BETWEEN THE ACTUAL SIZE OF AREAS ON THE SITE AND THE DRAWINGS, CONTACT THE PROJECT MANAGER FOR RESOLUTION.

10. IT IS THE LANDSCAPE CONTRACTOR'S RESPONSIBILITY TO FURNISH PLANTS FREE OF PESTS AND/OR DISEASES. PRE-SELECTED OR "PROJECT MANAGER TAGGED" PLANT MATERIAL MUST BE INSPECTED BY THE LANDSCAPE CONTRACTOR AND CERTIFIED PEST AND DISEASE FREE. IT IS THE LANDSCAPE CONTRACTOR'S OBLIGATION TO WARRANTY ALL PLANT MATERIAL PER THE SPECIFICATIONS.

11. GROUNDCOVERS AND SHRUBS ARE TO BE TRIANGULARLY SPACED UNLESS INDICATED ON THE PLANS.

12. ALL TREES WITHIN A SPECIES SHALL HAVE MATCHING FORM, UNLESS OTHERWISE NOTED.

13. ALL TREES, SHRUB AND GROUNDCOVER AREAS (EXCLUDING TURF AND SLOPE AREAS) ARE TO BE MULCHED PER DETAILS.

14. ALL MULCH TO BE SHREDDED HARDWOOD MULCH.

15. TREES SHALL BE SET BACK A MINIMUM OF TEN FEET (10') HORIZONTALLY FROM UTILITY STRUCTURES, INCLUDING, BUT NOT LIMITED TO, MANHOLES, VALVE VAULTS, VALVE BOXES, FIRE HYDRANTS, TRANSFORMERS AND SWITCH CANS. TREES SHALL BE SET BACK A MINIMUM OF FIVE (5') HORIZONTALLY FROM SANITARY SEWER AND WATER SERVICES. CONTRACTOR TO MAKE NECESSARY ADJUSTMENTS UNDER THE APPROVAL OF OWNER. REFER TO CIVIL DRAWINGS PREPARED BY OTHERS.

16. PLANTING RESTRICTIONS: PLANT DURING ONE OF THE FOLLOWING PERIODS. COORDINATE PLANTING PERIODS WITH MAINTENANCE PERIODS TO PROVIDE REQUIRED MAINTENANCE FROM DATE OF SUBSTANTIAL COMPLETION.

1. SPRING PLANTING: 4/1 - 6/15
2. FALL PLANTING: 9/1 - 11/1

PLANTING NOTES
SCALE: NTS
DT-plantnote-gm

REV.	COMMENT	DATE

SEAL:

DATE: 7/30/2013
JOB NO.: XXXXXX
DRAWN BY: MJA
CHECKED BY: TS

DRAWING TITLE:
PLANTING DETAILS

SHEET NO.:
LP-500